



# ILLUSTRATED PARTS BREAKDOWN

# LA75/LA75P

## COMPANION PRINTER

## HOW TO USE THE IPB

## GENERAL

**This IPB is compiled following the organization and nomenclature of the engineering drawing structure.**

### MAJOR ASSEMBLY LOCATOR (When Applicable)

**The Major Assembly Locator (first illustration) is an index that provides a description and a figure reference for all illustrations used in this manual.**

### INDENTED PARTS LIST

This manual identifies each assembly being broken down (figure reference callout), and all parts of that assembly. Further breakdown of an assembly is shown by an asterisk (\*) preceding the item callouts in the Description Column. The number of asterisks preceding an item is used to denote the subordination of that item with respect to the Major Assembly. A single asterisk preceding an item description indicates that the item is part of the major assembly being illustrated. Items that are subordinate to single asterisks items, are denoted by two asterisks (\*\*) and immediately follow the related single asterisk item. Additional asterisks are used, as required, to denote further subordination. This system of part identification, provides a means for the user to identify the next higher assembly item and make alternate selections for parts when the required replacement part of assembly is not immediately available.

### COLUMN CALLOUT DESCRIPTION

**Figure and Item** - Indicates the figure number and item number of each part.

**Description** - Lists the name of the part and pertinent specifications (when required). Asterisks preceding the description denote the subordination of the part to the next higher assembly.

**DEC Part No.** - Lists the Digital part ordering number. A blank in this column indicates a Digital part number was not assigned at the time of publication.

**ECO Cut-In** - The notation at the top of this column indicates the ECO level of the system (option), at which the IPB was initially prepared. Subsequent ECO level designations, that modify existing parts or add new parts to the device, are inserted in the ECO Cut-In column next to the part that is added or modified.

**Used On Code** - Letters in this column correspond to the variation codes assigned in Figure 1. Parts with an Alpha notation(s) are used only in those option variations. A blank indicates that the part is used on all option variations.

**Ref Fig No. -** A cross reference between illustrations. For each Major Assembly, the number in this column denotes the figure of the next higher assembly. For all subassemblies, the number in this column denotes the figure showing additional detailed breakdown.

### PART NUMBER/PART DESCRIPTION SORT SECTION

Parts are sorted both numerically and alphabetically by description, referenced to a location within the IPB, by figure number and item number.

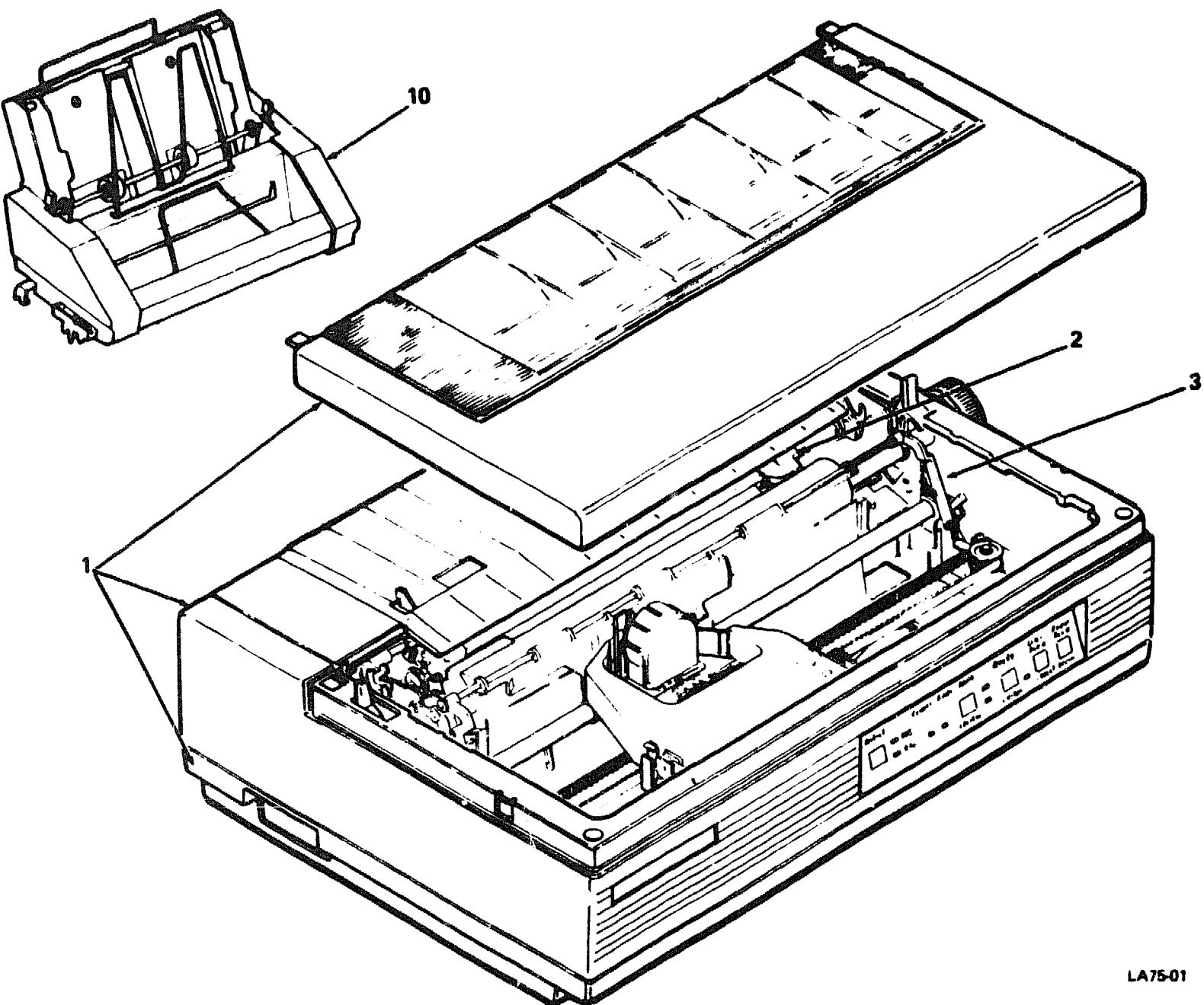
REVISION HISTORY			OTHER IPB MANUALS REQUIRED TO SUPPORT THIS OPTION . . . . .
PRINTING	ECO LEVEL	DATE	
3rd Printing	N/A	15-JAN-87	N/A

Copyright © 1987 by Digital Equipment Corporation. All Rights reserved.

Digital Equipment Corporation reserves the right, without notice, to make substitutions and modifications in the specifications of products documented in this manual and further reserves the right to withdraw any of these products from the market without notice.

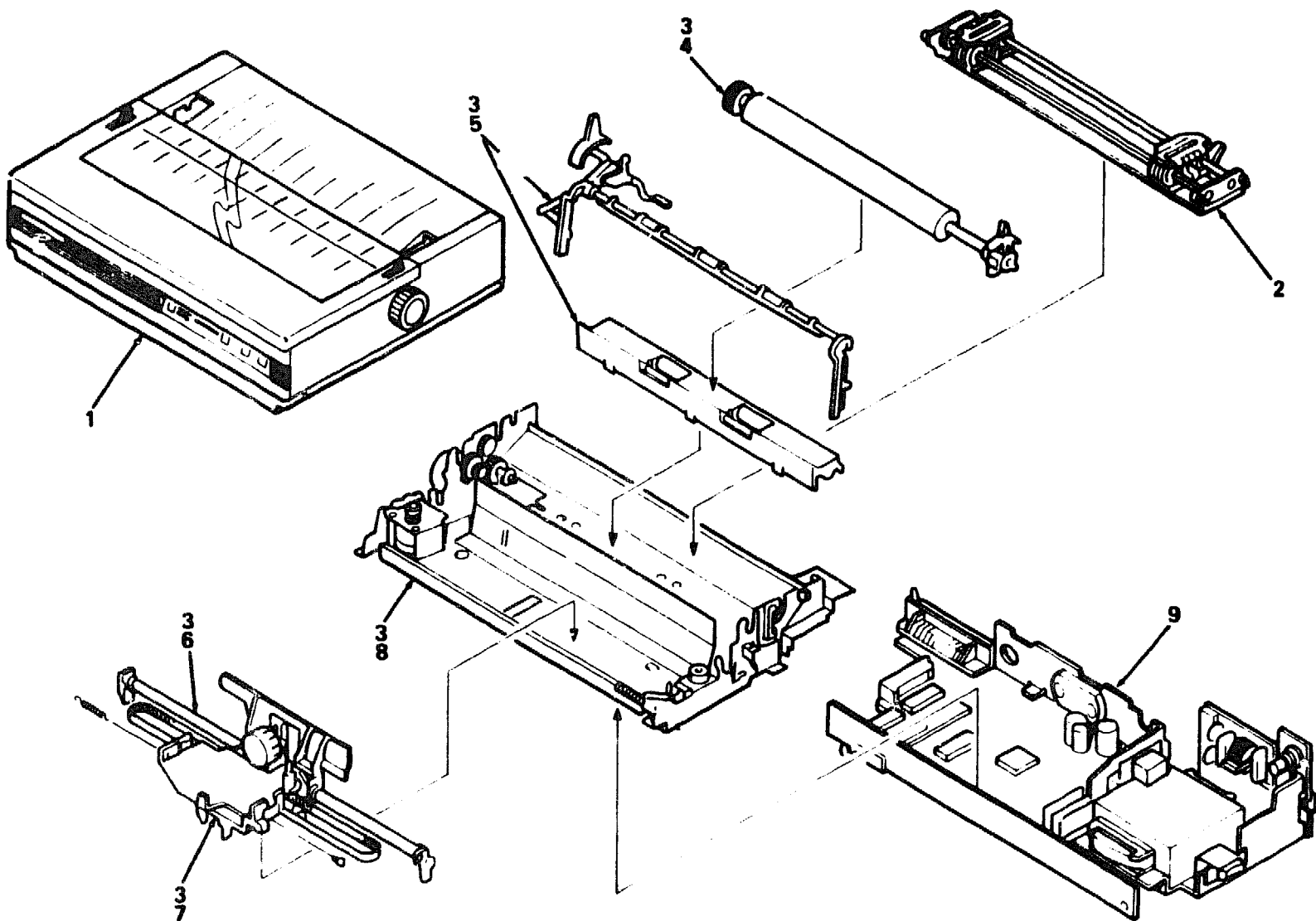
Digital Equipment Corporation is not responsible for errors which may appear in the technical description (including illustrations and photographs) of the products covered by this manual.

None of the descriptions contained in this manual imply the granting of any license whatsoever to make, use or sell equipment constructed in accordance therewith.



LA75-01

Figure 1. LA75 Companion Printer (Sheet 1 of 2)

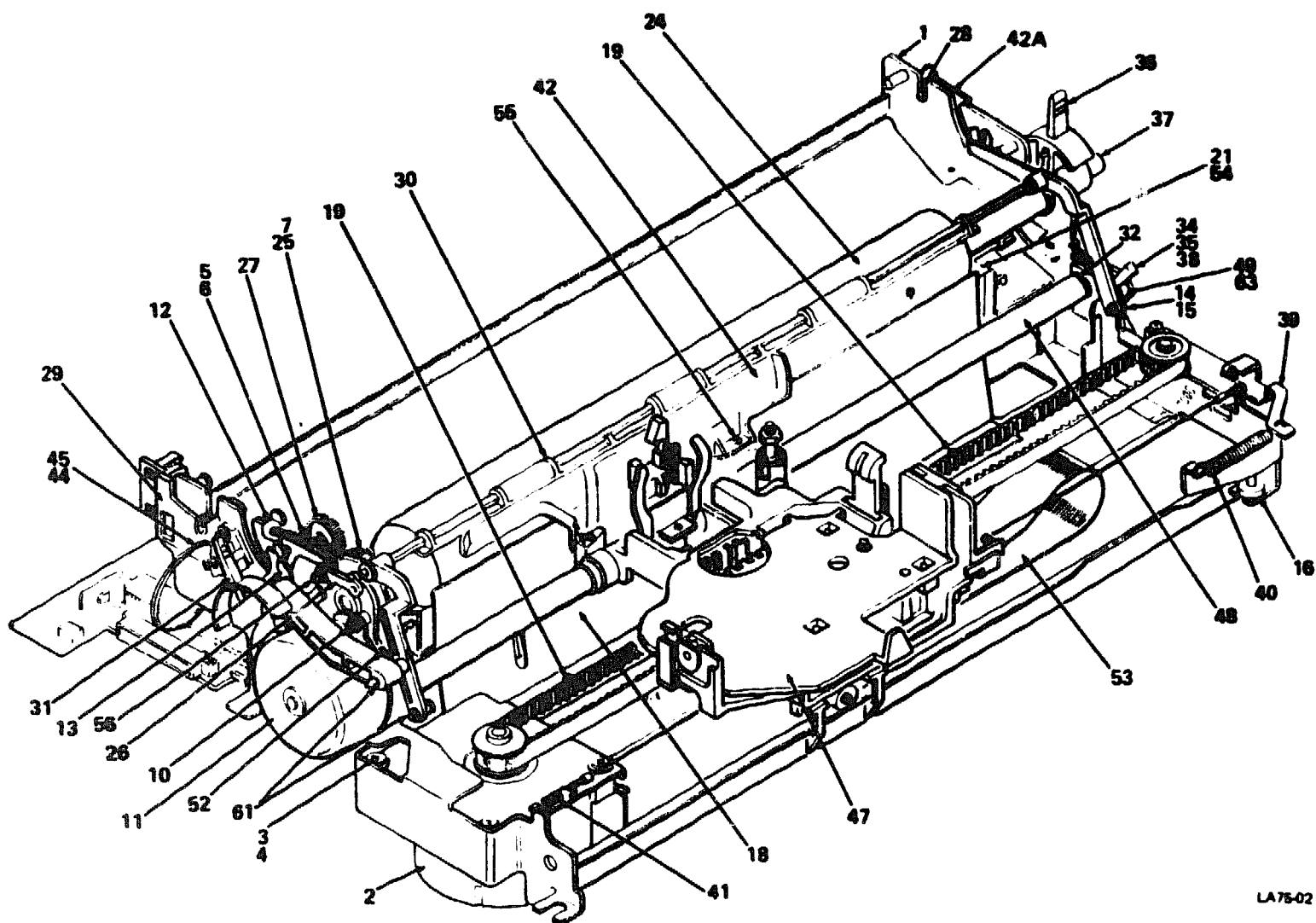


LA75-01A

Figure 1. LA75 Companion Printer (Sheet 2 of 2)

FIG. & ITEM NO.	DESCRIPTION	DEC PART NO.	ECO CUT-IN LA75 00000	USED ON CODE	REF FIG NO.
1-	LA75/LA75P COMPANION PRINTER				
	Code A - Model LA75-A2, 120V, 50/60 Hz	LA75-A2		A	
	Code B - Model LA75-A3, 240V, 50/60 Hz	LA75-A3		B	
	Code C - Model LA75-A4, 220V, 50/60 Hz	LA75-A4		C	
	Code D - Model LA75-A5, 100V, 50/60 Hz	LA75-A5		D	
	Code E - Model LA75P-A2, 120V, 50/60 Hz	LA75P-A2		E	
	Code F - Model LA75P-A3, 240V, 50/60 Hz	LA75P-A3		F	
	Code G - Model LA75P-A4, 220V, 50/60 Hz	LA75P-A4		G	
	Code H - Model LA75P-A5, 100V, 50/60 Hz	LA75P-A5		H	
1	*COVER ASSEMBLY	29-25967-00			3
2	*TRACTOR ASSEMBLY	29-25917-00			4
3	*MECHANICAL ASSEMBLY	29-25918-00			2
4	**PLATEN UNIT ASSEMBLY	29-25955-00			5
5	**PAPER GUIDE ASSEMBLY	_____			6
6	**CARRIAGE ASSEMBLY (TOP)	_____			7
7	**CARRIAGE ASSEMBLY (BOTTOM)	29-25922-00			8
8	**FRAME ASSEMBLY	_____			9
9	*POWER SUPPLY & PCB (EP) ASSEMBLY	_____			10
10	*LA75X-SF Automatic Sheet Feeder (Optional)	30-27294-01			
	MISCELLANEOUS HARDWARE KITS (Not Shown)				
	*MISCELLANEOUS SCREW/NUT/WASHER KIT	29-25975-00			
	**Screw, Frame Set	_____			
	**Screw, Carriage Motor (B)	_____			
	**Screw, Set, Paper Feed Motor	_____			
	**Screw, Deflector	_____			
	**Screw, Impression Control	_____			
	**Washer, Impression Control Lever	_____			
	**Screw, Tapping (M2.6x6)	_____			
	**Screw, Tapping (M3x6)	_____			
	**Screw, Sems (M3x6)	_____			
	**Screw, Sems Washer Hd (M2.6x6)	_____			
	**Screw, Sems Washer Hd (M3x6)	_____			
	**Screw, Sems Washer Hd (M3x8)	_____			
	**Screw, Sems Washer Hd (M3x10)	_____			
	**Screw, Sems Washer Hd (M4x6)	_____			
	**Screw, Sems Washer Hd (M4x8)	_____			
	**Screw, Sems Washer Hd (M4x12)	_____			
	*MISCELLANEOUS SPRING KIT	29-25976-00			
	**Spring, Carrier Pulley Arm	_____			
	**Spring, Ribbon Wire	_____			
	**Spring, Bail Roller Arm	_____			
	**Spring, Shift Gear	_____			
	**Spring, Tractor Lock	_____			
	**Spring, Platen Knob	_____			
	**Spring, Indicator	_____			
	**Spring, Platen Gear	_____			

FIG. & ITEM NO.	DESCRIPTION	DEC PART NO.	ECO CUT-IN	USED ON CODE	REF FIG NO.
1-	Miscellaneous Hardware Kits (Not Shown)				
	*MISCELLANEOUS E-RING KIT	29-25977-00			
	**E-Ring, (M2)	_____			
	**E-Ring, (M2.5)	_____			
	**E-Ring, (M3)	_____			
	**E-Ring, (M4)	_____			
	*MISCELLANEOUS GEAR KIT	29-25978-00			
	**Gear, Tractor Idler	_____			
	**Gear, Shift	_____			
	**Gear, Reduction	_____			
	**Gear, Platen (A)	_____			
	**Gear, Platen (B)	_____			
	**Gear, Tractor	_____			
	*MISCELLANEOUS MECHANICAL ASSEMBLY ACCESSORY KIT	29-25966-00			
	**Washer, Impression Control Lever	_____			
	**Plate, Carriage Shaft Spring, Right	_____			
	**Cushion, Rubber, Printer	_____			
	**Cushion, Carriage Motor	_____			
	**Screw, Carriage Motor	_____			
	**Stopper, Paper Feed Motor	_____			
	**Screw, Set, Paper Feed Motor	_____			
	**Plate, Paper Feed Motor	_____			
	**Plate, Ground	_____			



LA75-02

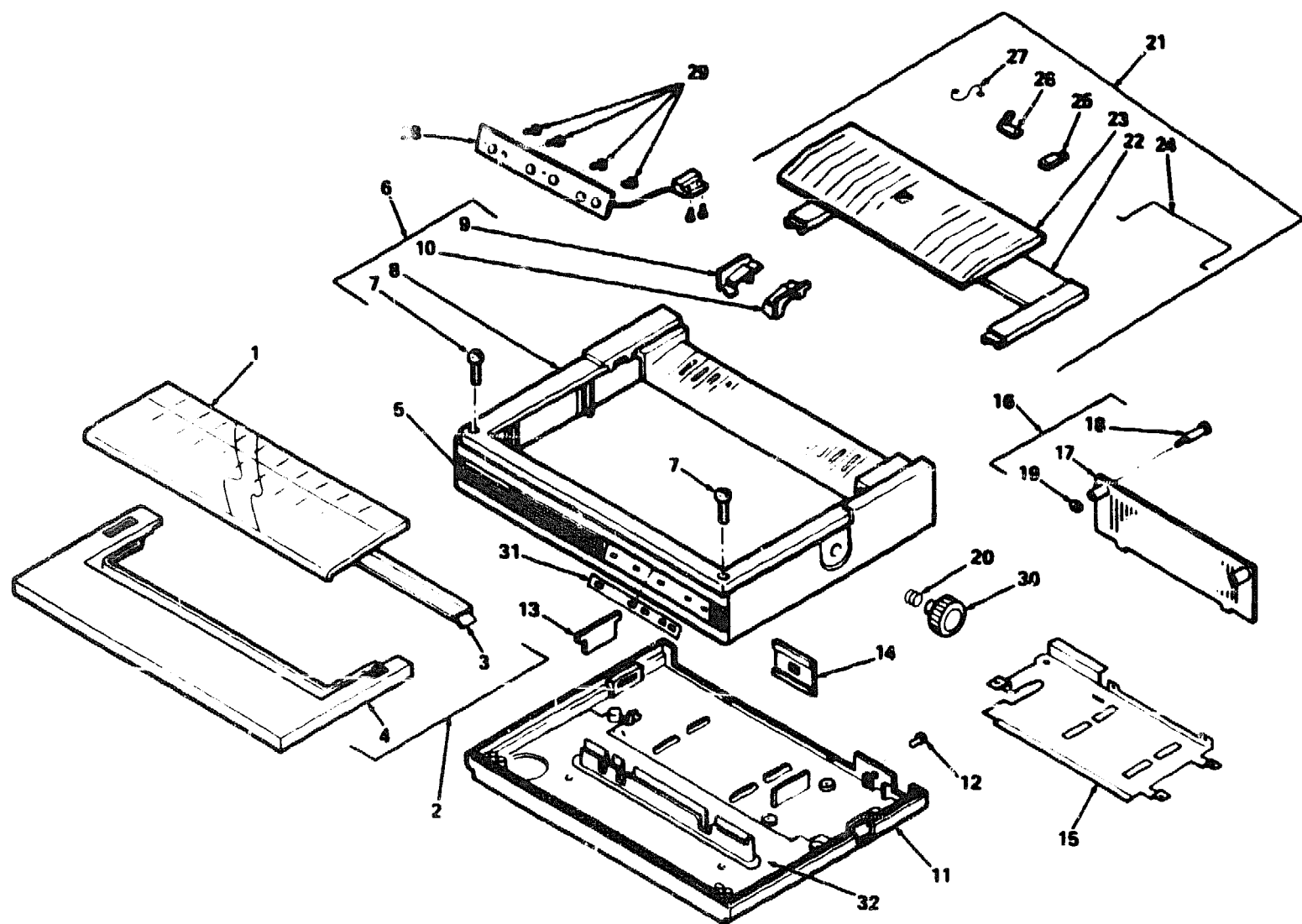
Figure 2. Mechanical Assembly

FIG. & ITEM NO.	DESCRIPTION	DEC PART NO.	ECO CUT-IN	USED ON CODE	REF FIG NO.
2-	PRINTER MECHANICAL ASSEMBLY	29-25918-00			1
1	*Frame				9-19
2	*CARRIAGE MOTOR ASSEMBLY	29-25958-00			9-15
3	*Cushion, Carriage Motor (B)	See Note 3			9-10
4	*Screw, Carriage Motor (B)	See Note 3			9-9
5	*Gear, Shift	See Note 4			9-37
6	*Spring, Shift Gear	See Note 1			9-38
7	*Gear, Reduction	See Note 4			9-39
8	*Plate, Spring, Carriage Shaft, Left (Not Shown)	29-25948-00			9-35
9	*Stopper, Paper Feed Motor (Not Shown)	See Note 3			9-8
10	*Screw, Set, Paper Feed Motor	See Note 3			9-6
11	*Motor, Line Feed	29-25921-00			9-7
12	*Lever, Tractor Lock, Left	29-25932-00			9-4
13	*Spring, Tractor Lock	See Note 5			9-5
14	*Plate, Spring, Carriage Shaft, Right	29-25941-00			9-25
15	*Plate, Spring, Free Lever	29-25942-00			9-26
16	*Cushion, Rubber, Printer	See Note 3			9-12
17	*Plate, Bail Roller, Hold (Not Shown)	29-25938-00			9-2
18	*Deflector 1 (Old Design)	29-25934-00			9-14
	*Deflector 2 (New Design)	29-26376-00			9-14
19	*Screw, Deflector	See Note 1			9-13
20	*Cam, Shift Gear (Not Shown)	29-25945-00			9-32
21	*Paper Guide	29-25930-00			6-5
22	*PINCH ROLLER ASSEMBLY (Not Shown)	29-25924-00			6-1
23	*Spring, Pinch Roller (Not Shown)	29-25931-00			6-6
24	*Platen Assembly	29-25955-00			5-1
25	*Bushing, Platen, Left				5-2
26	*Plate, Platen Bushing	29-25939-00			9-3
27	*Gear, Tractor Idler	See Note 4			9-36
28	*Holder, Tractor (R)	29-25954-00			9-28
29	*Catch, Tractor (A)	29-25947-00			9-34
30	*BAIL BAR ASSEMBLY	29-25964-00			6-8
31	*Lever, Bail Release	29-25970-00			6-7
32	*Cam, Carriage	29-25953-00			7-11
33	*Plate, Adjust (A) (Not Shown)	29-25927-00			7-4
	*Plate, Adjust (B) (Not Shown)	29-25928-00			7-4
	*Plate, Adjust (C) (Not Shown)	29-25929-00			7-4
34	*Lever, Impression Control	29-25963-00			9-22
35	*Washer, Impression Control Lever	See Notes 1 & 3			9-23
36	*Lever, Release				5-13
37	*Lever, Free				5-14
38	*Screw, Impression Control	See Note 1			9-24
39	*Arm, Carriage Pulley	29-25935-00			9-41
40	*Spring, Carriage Pulley Arm	See Note 5			9-40
41	*Spring, Ribbon Wire	See Note 5			7-2
42	*Smudge Guard	29-25920-00			7-9
42A	*Lever, Tractor Lock, Right				9-43



FIG. & ITEM NO.	DESCRIPTION	DEC PART NO.	ECO CUT-IN	USED ON CODE	REF FIG NO.
2-					
43	*MOTHER BOARD (Not Shown)	29-25936-00			10-8
44	*Sensor, Paper-Out	29-25925-00			9-42
45	*SENSOR ASSEMBLY	29-25957-00			9-1
46	*Bushings, Carriage Shaft (Not Shown)	29-25950-00			7-6
47	*CARRIAGE ASSEMBLY (BOTTOM)	29-25922-00			8
48	*Shaft, Carriage	29-25951-00			7-7
49	*Lever, Impression Control (B)	29-25949-00			7-5
50	*Holder, Flexible Cable (Not Shown)	_____			
51	*Protector (Not Shown)	_____			
52	*Spring, Bail Roller Arm	See Note 5			6-14
53	*Cable, Printhead	29-25923-00			7-3
54	*Screw, Sems M3x6	See Note 1			
55	*Screw, Double Sems, M2.6x6	See Note 1			
56	*Screw, Double Sems, M3x6	See Note 1			
57	*Screw, Double Sems, M3x8 (Not Shown)	See Note 1			
58	*Screw, Double Sems, M3x10 (Not Shown)	See Note 1			
59	*Screw, Double Sems, M4x6 (Not Shown)	See Note 1			10-24
60	*Screw, Double Sems, M4x8 (Not Shown)	See Note 1			10-23
61	*E-Ring, M2	See Note 2			6-15
62	*E-Ring, M3 (Not Shown)	See Note 2			8-35, 9-48
63	*E-Ring, M4	See Note 2			7-12, 8-34, 9-49
	Accessory Kit (Not Shown)				
	*MECHANICAL ASSEMBLY MISCELLANEOUS PARTS KIT	29-25966-00			
	**Washer, Impression Control Lever	_____			
	**Plate, Spring, Carriage Shaft, Right	_____			
	**Rubber, Printer Cushion	_____			
	**Cushion, Carriage Motor	_____			
	**Screw, Carriage Motor	_____			
	**Stopper, Paper Feed Motor	_____			
	**Screw, Set, Paper Feed Motor	_____			
	**Plate, Paper Feed Motor	_____			
	**Plate, Ground	_____			

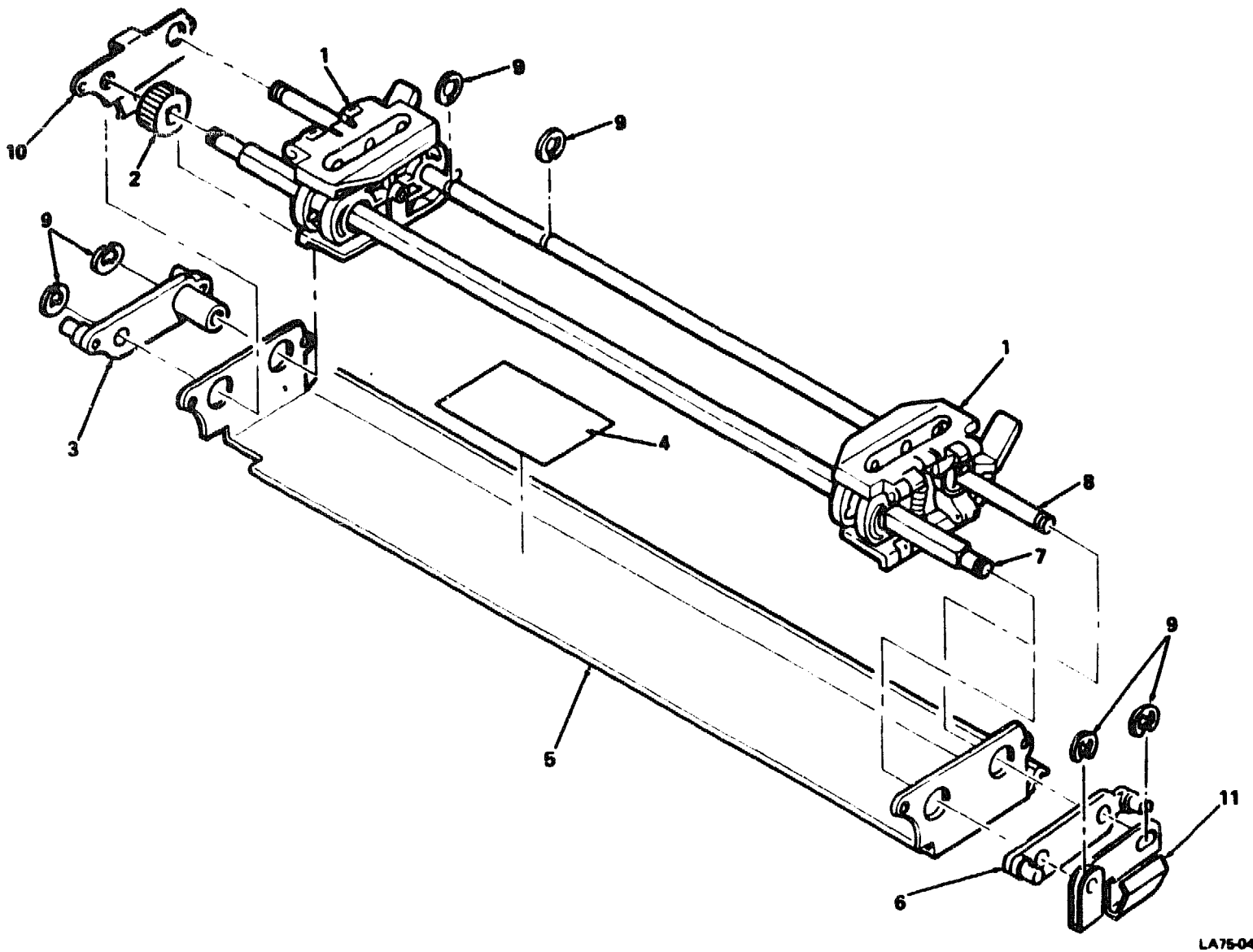
FIG. & ITEM NO.	DESCRIPTION	DEC PART NO.	ECO CUT-IN	USED ON CODE	REF FIG NO.
2-	<p>NOTE 1: This part included in MISCELLANEOUS SCREW/NUT/WASHER KIT (DEC Part No. 29-25975-00) See page 4.</p> <p>NOTE 2: This part included in MISCELLANEOUS E-RING KIT (DEC Part No. 29-25977-00) See page 5/6.</p> <p>NOTE 3: This part included in MECHANICAL ASSEMBLY ACCESSORY KIT (DEC Part No. 29-25966-00) See page 5/6.</p> <p>NOTE 4: This part included in MISCELLANEOUS GEAR KIT (DEC Part No. 29-25978-00) See page 5/6.</p> <p>NOTE 5: This part included in MISCELLANEOUS SPRING KIT (DEC Part No. 29-25976-00) See page 4.</p>				



LA75-03

Figure 3. Cover Assembly

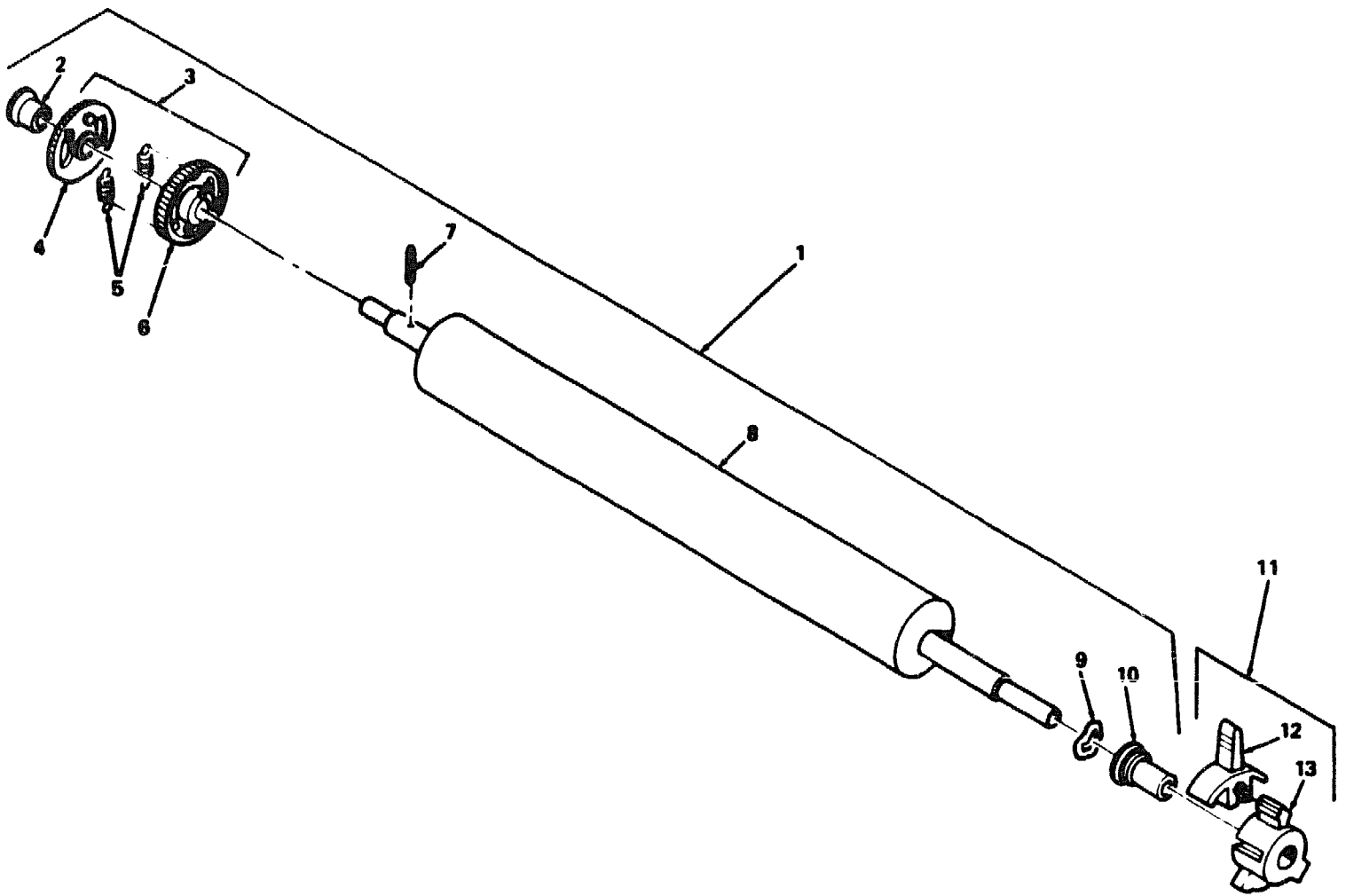
FIG. & ITEM NO.	DESCRIPTION	DEC PART NO.	ECO CUT-IN	USED ON CODE	REF FIG NO.
3-	COVER ASSEMBLY	29-25967-00			1
1	*Paper Window	29-25979-00			
2	*ACCESS COVER ASSEMBLY	29-25972-00			
3	**Tear Bar	_____			
4	**Carriage Cover	_____			
5	*Operation Panel Plate	_____			
6	*TOP COVER ASSEMBLY	_____			
7	**Screw, Top Cover	_____			
8	**Top Cover	_____			
9	**Indicator (Left)	_____			
10	**Indicator (Right)	_____			
11	*BOTTOM COVER ASSEMBLY	_____			
12	**Screw, Bottom Cover	_____			
13	*Cassette Cover	_____			
14	*Slide Cover	_____			
15	*Shield Plate	_____			
16	*LOGIC BOARD ACCESS COVER ASSEMBLY	29-25974-00			
17	**Back Cover	_____			
18	**Screw, Back Cover	_____			
19	**E-Ring	See Note 1			
20	*Spring, Platen Knob	See Note 2			
21	*PAPER COVER ASSEMBLY	29-25973-00			
22	**Rear Cover	_____			
23	**Cover, Paper Stand	_____			
24	**Paper Stand	_____			
25	**Leg, Paper Stand	_____			
26	**Indicator	_____			
27	**Spring, Indicator	See Note 2			
28	*Control Panel	29-25969-00			
29	*Screw, Tapping (M3x6)	See Note 3			
30	*Knob, Platen	29-25971-00			
31	*Label, "Front Plate"	36-27022-01			
32	*Ground Plate	29-26205-00			
	NOTE 1: This part included in MISCELLANEOUS E-RING KIT (DEC Part No. 29-25977-00) See Page 5/6.				
	NOTE 2: This part included in MISCELLANEOUS SPRING KIT (DEC Part No. 29-25976-00) See Page 4.				
	NOTE 3: This part included in MISCELLANEOUS SCREW/NUT/WASHER KIT (DEC Part No. 29-25975-00) See Page 4.				



LA75-04

Figure 4. Tractor Assembly

FIG. & ITEM NO.	DESCRIPTION	DEC PART NO.	ECO CUT-IN	USED ON CODE	REF FIG NO.
4-	TRACTOR ASSEMBLY	29-25917-00			1
1	*Tractor Unit Assembly	29-26377-00			
2	*Gear, Tractor	See Note 1			
3	*Bushing, Left, Tractor	_____			
4	*Label, "Selection"	_____			
5	*Frame, Tractor	_____			
6	*Bushing, Right, Tractor	_____			
7	*Shaft (B), Tractor	_____			
8	*Shaft (A), Tractor	_____			
9	*E-Ring, M4	See Note 2			
10	*Ground Plate (A), Tractor	_____			
11	*Ground Plate (B), Tractor	_____			
	NOTE 1: This part included in MISCELLANEOUS GEAR KIT (DEC Part No. 29-25978-00) See page 5/6.				
	NOTE 2: This part included in MISCELLANEOUS E-RING KIT (DEC Part No. 29-25977-00) See page 5/6.				

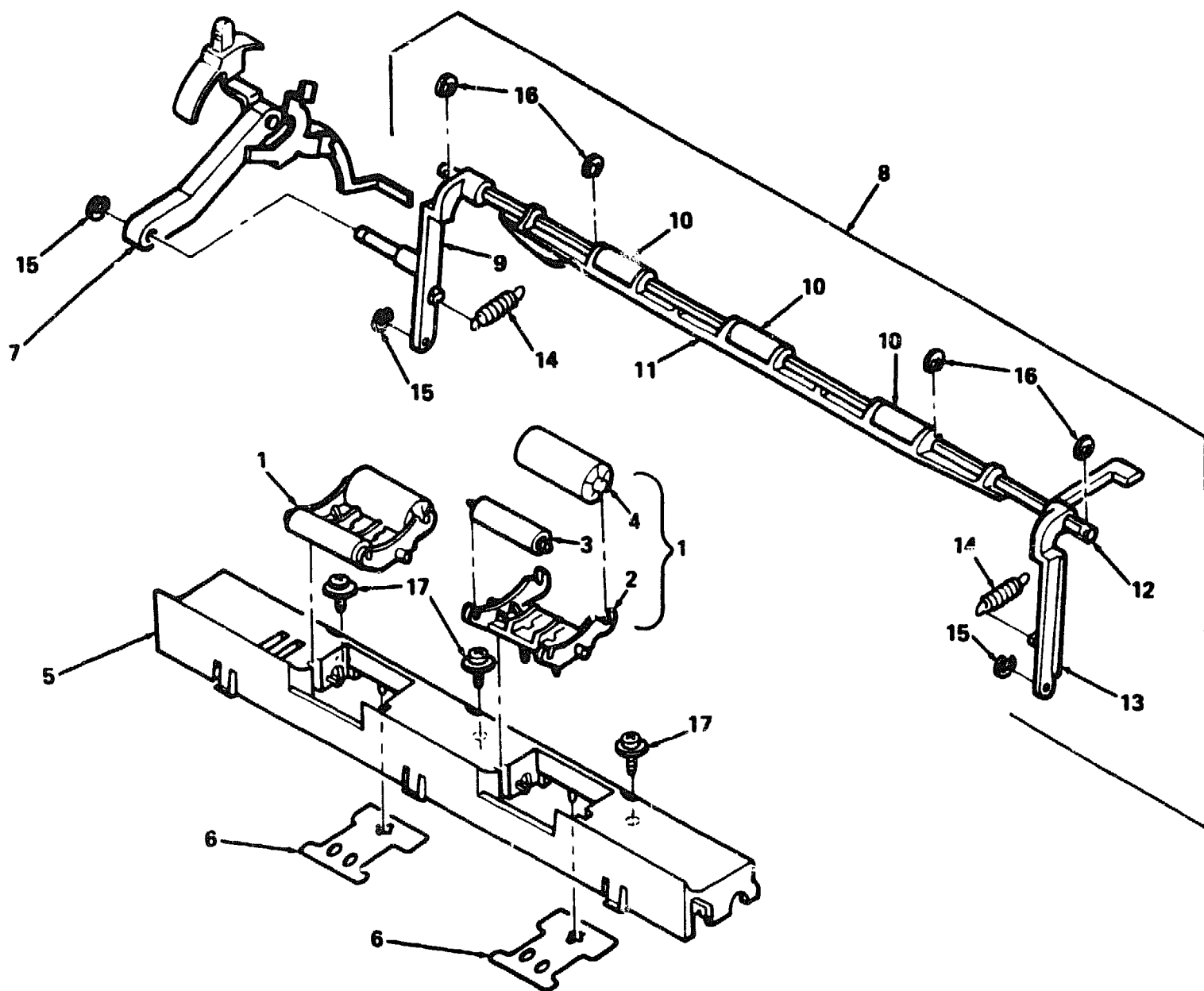


LA 75-06

Figure 5. Platen Unit Assembly

FIG. & ITEM NO.	DESCRIPTION	DEC PART NO.	ECO CUT-IN	USED ON CODE	REF FIG NO.
5—	PLATEN UNIT ASSEMBLY				1
1	*PLATEN ASSEMBLY	29-25955-00			
2	**Bushing, Platen, Left	_____			
3	**Platen Gear Assembly	_____			
4	***Gear, Platen (B)	See Note 1			
5	***Spring, Platen Gear	See Note 2			
6	***Gear, Platen (A)	See Note 1			
7	**Pin, Set (M2 x 16)	_____			
8	**Platen	_____			
9	**Spring, Platen	_____			
10	**Bushing, Platen, Right	_____			
11	*Friction Release Lever Assembly	29-25919-00			
12	**Lever, Release	_____			
13	**Lever, Free	_____			
	NOTE 1: This part included in MISCELLANEOUS GEAR KIT (DEC Part No. 29-25978-00) See page 5/6.				
	NOTE 2: This part included in MISCELLANEOUS SPRING KIT (DEC Part No. 29-25976-00) See page 4.				

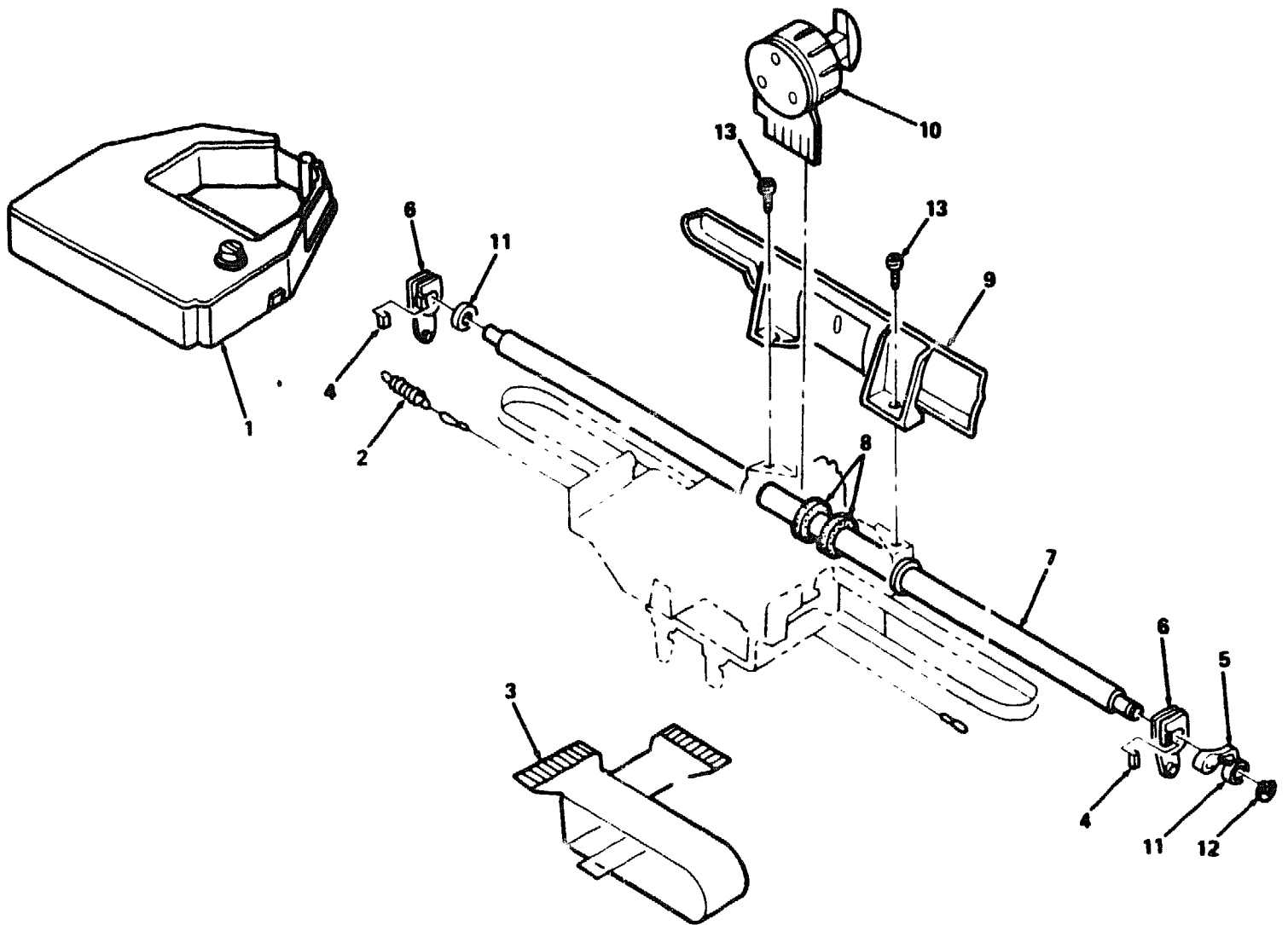




LA75-08

Figure 6. Paper Guide Assembly

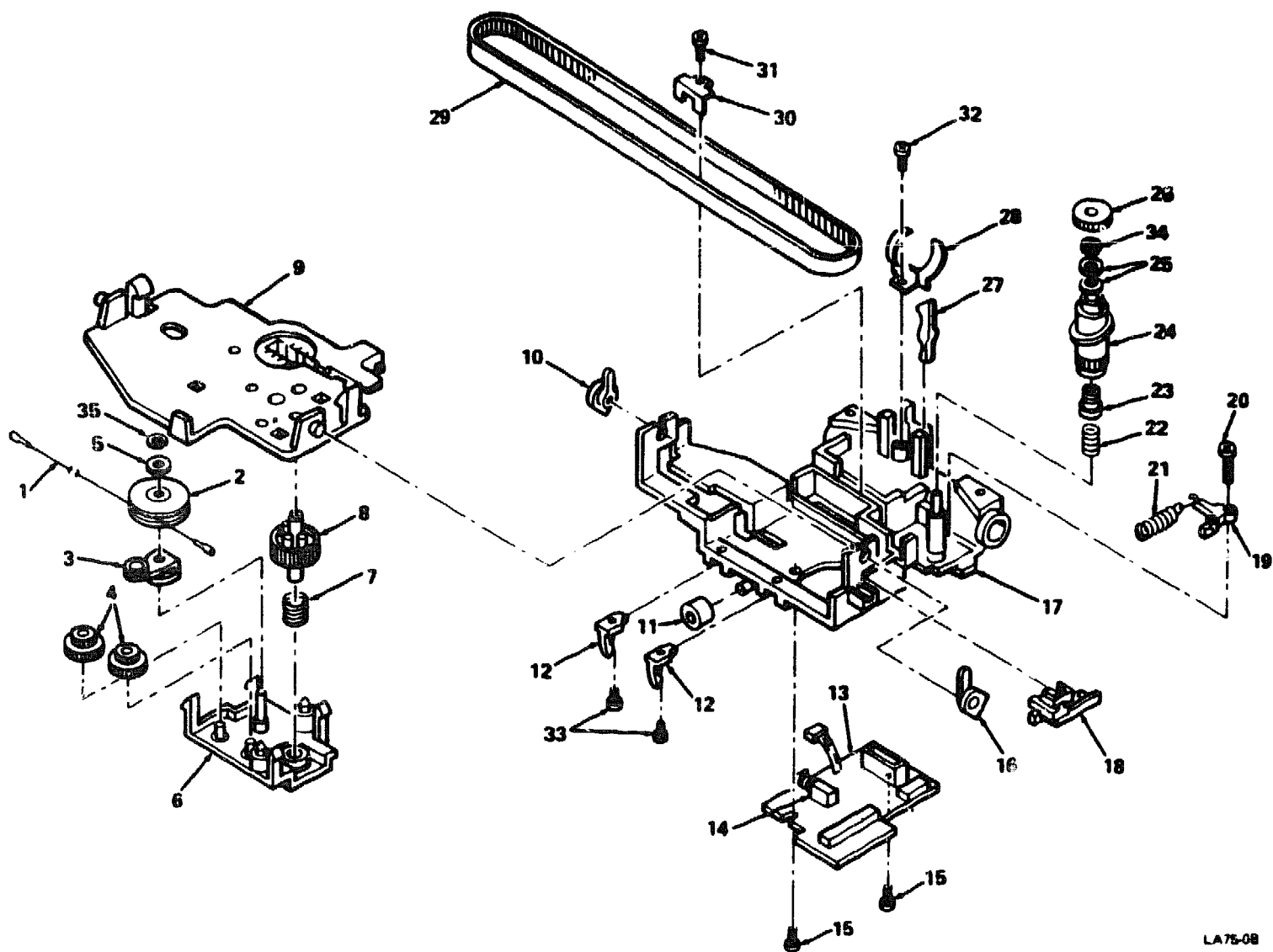
FIG. & ITEM NO.	DESCRIPTION	DEC PART NO.	ECO CUT-IN	USED ON CODE	REF FIG NO.
6-	PAPER GUIDE ASSEMBLY				1
1	PINCH ROLLER ASSEMBLY	29-25924-00			
2	**Arm, Pinch Roller	_____			
3	**Roller, Pinch (B)	_____			
4	**Roller, Pinch (C)	_____			
5	*Guide, Paper	29-25930-00			
6	*Spring, Pinch Roller	29-25931-00			
7	*Lever, Bail Release	29-25970-00			
8	*BAIL BAR ASSEMBLY	29-25964-00			
9	**Arm, Bail Roller, Left	_____			
10	**Roller, Bail	_____			
11	**Guide, Sheet	_____			
12	**Shaft, Bail Roller	_____			
13	**Arm, Bail Roller, Right	_____			
14	**Spring, Bail Roller Arm	See Note 1			
15	**E-Ring (M2)	See Note 2			
16	**E-Ring (M2.5)	See Note 2			
17	*Screw, Sems Washer Hd (M3x6)	See Note 3			
	NOTE 1: This part included in MISCELLANEOUS SPRING KIT (DEC Part No. 29-25976-00) See page 4.				
	NOTE 2: This part included in MISCELLANEOUS E-RING KIT (DEC Part No. 29-25977-00) See page 5/6.				
	NOTE 3: This part included in MISCELLANEOUS SCREW/NUT/WASHER KIT (DEC Part No. 29-25975-00) See page 4.				



LA75-07

Figure 7. Carriage Assembly (Top)

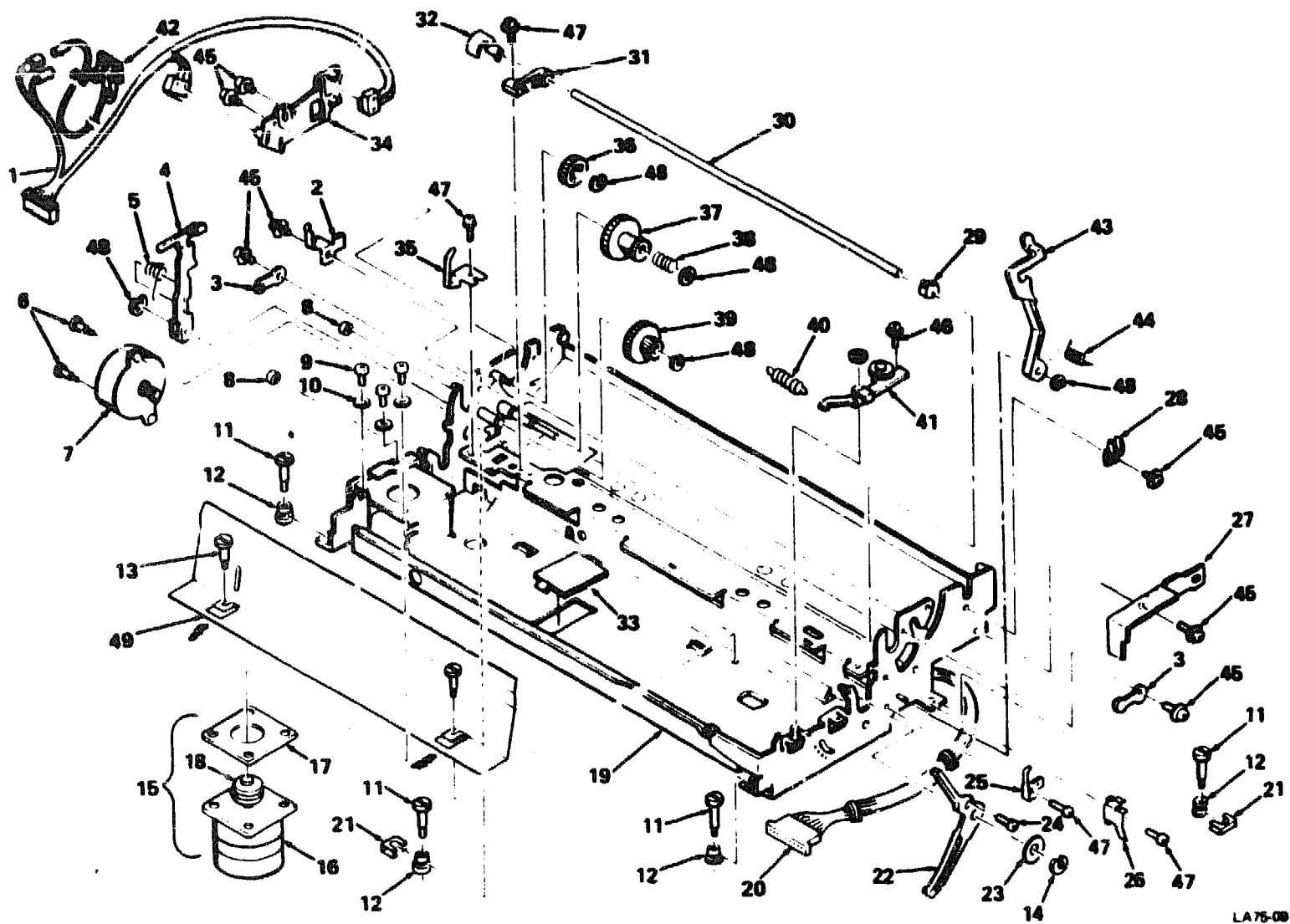
FIG. & ITEM NO.	DESCRIPTION	DEC PART NO.	ECO CUT-IN	USED ON CODE	REF FIG NO.
7-	CARRIAGE ASSEMBLY (TOP)				1
1	*Cartridge, Ribbon, LA50 (See Note 1)	29-20464-01			
2	*Spring, Ribbon Wire	See Note 2			
3	*Cable, Printhead	29-25923-00			
4	*Plate, Adjust, t0.5 (A)	29-25927-00			
	*Plate, Adjust, t0.1 (B)	29-25928-00			
	*Plate, Adjust, t0.2 (C)	29-25929-00			
5	*Lever, Impression Control (B)	29-25949-00			
6	*Bushing, Carriage Shaft	29-25950-00			
7	*Shaft, Carriage	29-25951-00			
8	*Wiper, Felt	29-25952-00			
9	*Smudge Guard	29-25920-00			
10	*PRINthead ASSEMBLY	29-25916-00			
11	*Cam, Carriage	29-25953-00			
12	*E-Ring (M4)	See Note 3			
13	*Screw, Sems Washer Hu (M2.6x6)	See Note 4			
	NOTE 1: LA50R-06 (Box of 6)				
	NOTE 2: This part included in MISCELLANEOUS SPRING KIT (DEC Part No. 29-25976-00) See page 4.				
	NOTE 3: This part included in MISCELLANEOUS E-RING KIT (DEC Part No. 29-25977-00) See page 5/6.				
	NOTE 4: This part included in MISCELLANEOUS SCREW/NUT/WASHER KIT (DEC Part No. 29-25975-00) See page 4.				



LA75-08

Figure 8. Carriage Assembly (Bottom)

FIG. & ITEM NO.	DESCRIPTION	DEC PART NO.	ECO CUT-IN	USED ON CODE	REF FIG NO.
8-	CARRIAGE ASSEMBLY (BOTTOM)	29-25922-00			1
1	*Wire, Ribbon	29-26206-00			
2	*Pulley, Ribbon	_____			
3	*Plate, Select	_____			
4	*Gear, Twin	_____			
5	*Washer, Ribbon Pulley	_____			
6	*Frame, Ribbon, Bottom	_____			
7	*Spring, Ribbon	_____			
8	*Gear, Ribbon Drive	_____			
9	*Frame, Ribbon, Top	_____			
10	*Bushing, Ribbon Frame, Left	_____			
11	*Roller, Carriage	_____			
12	*Clamp, Carriage	_____			
13	*Head PCB Assembly	29-26256-00			
14	**Switch, Home Position	_____			
15	**Screw, Head PCB	_____			
16	*Bushing, Ribbon Frame, Right	_____			
17	*Carriage	_____			
18	*Guide, Lead Wire	_____			
19	*Stopper, Cam	_____			
20	*Screw, Cam Stopper	_____			
21	*Spring, Cam Stopper	_____			
22	*Spring, Adjust	_____			
23	*Nut, Adjust	_____			
24	*Cam, Ribbon Shift	_____			
25	*Washer, Adjust (M5.5)	_____			
26	*Nut, Lock	_____			
27	*Clamp, Head	29-26251-00			
28	*Spring, Head	29-26252-00			
29	*Belt, Carriage	29-25937-00			
30	*Guide, Belt	_____			
31	*Screw, Sems (M3x10)	See Note 1			
32	*Screw, Tapping (M2.6x6)	See Note 1			
33	*Screw, (M2.6x5)	_____			
34	*E-RING (M4)	See Note 2			
35	*E-RING (M3)	See Note 2			
	<p>NOTE 1: This part included in MISCELLANEOUS SCREW/NUT/WASHER KIT (DEC Part No. 29-25975-00) See Page 4.</p> <p>NOTE 2: This part included in MISCELLANEOUS E-RING KIT (DEC Part No. 29-25977-00) See Page 5/6.</p>				



LA75-08

Figure 9. Frame Assembly

FIG. & ITEM NO.	DESCRIPTION	DEC PART NO.	ECO CUT-IN	USED ON CODE	REF FIG NO.
9-	FRAME ASSEMBLY				1
1	*SENSOR ASSEMBLY	29-25957-00			
2	*Plate, Bail Roller Hold	29-25938-00			
3	*Plate, Platen Bushing	29-25939-00			
4	*Lever, Tractor Lock, Left	29-25932-00			
5	*Spring, Tractor Lock	See Note 1			
6	*Screw, Set, Paper Feed Motor	See Note 4			
7	*Motor, Line Feed	29-25921-00			
8	*Stopper, Paper Feed Motor (SEE NOTE 4)	29-25933-00			
9	*Screw, Carriage Motor (B)	See Note 4			
10	*Cushion, Carriage Motor (B)	See Note 4			
11	*Screw, Set, Frame				
12	*Cushion, Rubber, Printer	See Note 4			
13	*Screw, Deflector (deleted)	See Note 2			
14	*E-Ring (M4)	See Note 3			
15	*CARRIAGE MOTOR ASSEMBLY	29-25956-00			
16	**Motor, Carriage				
17	**Cushion, Carriage Motor				
18	**Pulley, Carriage Motor				
19	*Frame				
20	*Cable, Control Panel, 16 Pin	29-25940-00			
21	*Ground Plate A				
22	*Lever, Impression Control (A)	29-25963-00			
23	*Washer, Impression Control Lever	See Notes 2 & 4			
24	*Screw, Impression Control	See Note 2			
25	*Plate, Spring, Carriage Shaft, Right	29-25941-00			
26	*Spring, Plate, Free Lever	29-25942-00			
27	*Ground Plate, Tractor	29-26149-00			
28	*Holder, Tractor (R)	29-25954-00			
29	*Gear, Pinch Roller				
30	*Shaft, Pinch Roller	29-25943-00			
31	*Supporter, Shift Gear Cam	29-25944-00			
32	*Cam, Shift Gear	29-25945-00			
33	*Holder, Flexible Cable				
34	*Catch, Tractor (A)	29-25947-00			
35	*Plate, Spring, Carriage Shaft, Left	29-25948-00			
36	*Gear, Tractor Idler	See Note 5			
37	*Gear, Shift				
38	*Spring, Shift Gear	See Note 1			
39	*Gear, Reduction				
40	*Spring, Carriage Pulley Arm	See Note 1			
41	*Arm, Carriage Pulley	29-25935-00			
42	*Paper-Out Sensor	29-25925-00			
43	*Lever, Tractor Lock, (Right)	29-26148-00			



FIG. & ITEM NO.	DESCRIPTION	DEC PART NO.	ECO CUT-IN	USED ON CODE	REF FIG NO.
9-					
44	*Spring, Tractor Lock	See Note 1			
45	*Screw, Sems Washer Hd (M3x6)	See Note 2			
46	*Screw, Sems Washer Hd (M4x8)	See Note 2			
47	*Screw, Tapping (M3x6)	See Note 2			
48	*E-Ring (M3)	See Note 3			
49	*Deflector 1      See Note 6	29-25934-00			
	*Deflector 2      See Note 6	29-26376-00			
	NOTE 1: This part included in MISCELLANEOUS SPRING KIT (DEC Part No. 29-25976-00) See page 4.				
	NOTE 2: This part included in MISCELLANEOUS SCREW/NUT/WASHER KIT (DEC Part No. 29-25975-00) See page 4.				
	NOTE 3: This part included in MISCELLANEOUS E-RING KIT (DEC Part No. 29-25977-00) See page 5/6.				
	NOTE 4: This part included in MECHANICAL ASSEMBLY ACCESSORY KIT (DEC Part No. 29-25966-00) See page 5/6.				
	NOTE 5: This part included in MISCELLANEOUS GEAR KIT (DEC Part No. 29-25978-00) See page 5/6.				
	NOTE 6: Deflector 1 used on printers with serial numbers 0000 through 1427. Deflector 2 used on printers with serial numbers 1428 and higher.				

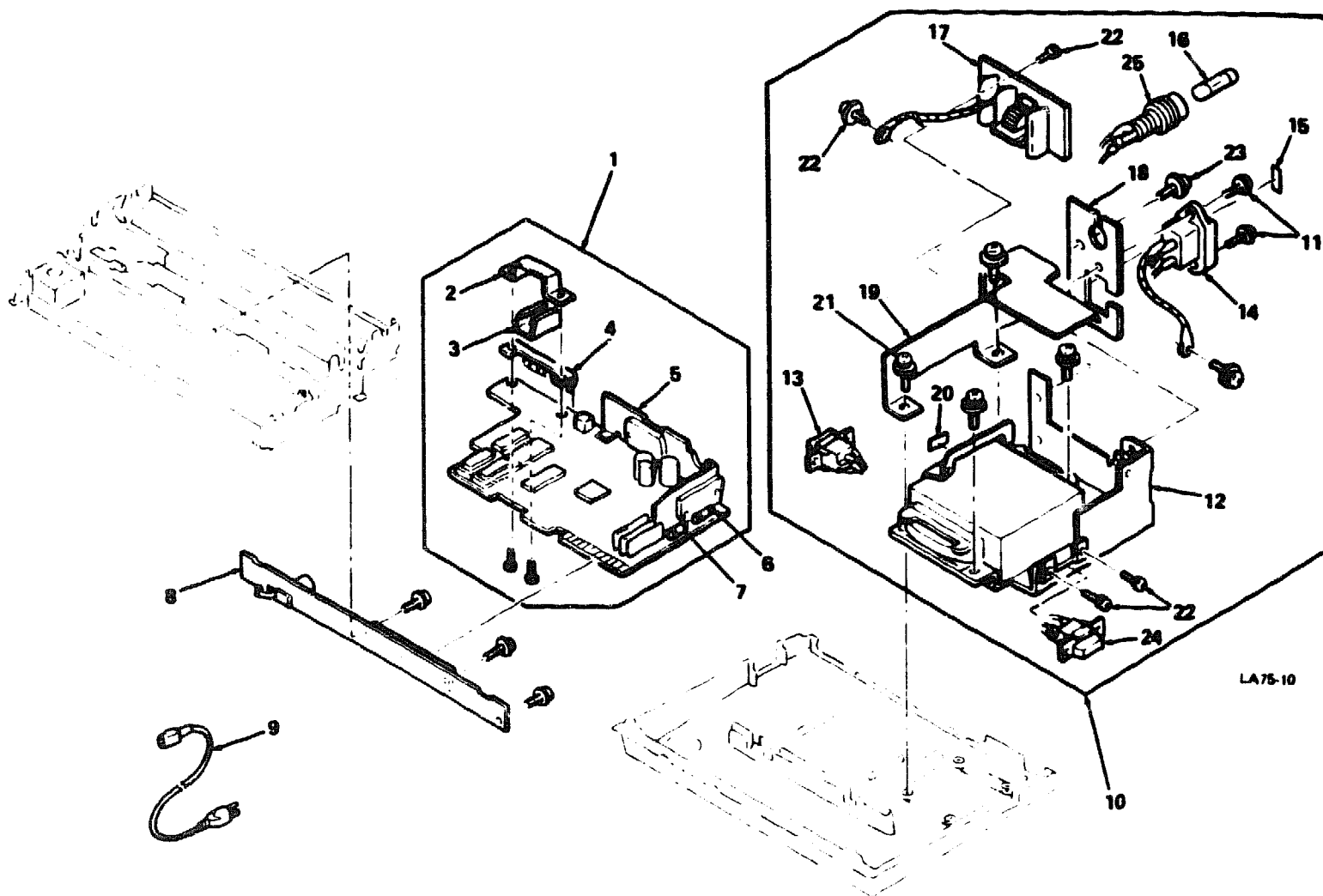


Figure 10. Power Supply and PCB Assembly

FIG. & ITEM NO.	DESCRIPTION	DEC PART NO.	ECO CUT-IN	USED ON CODE	REF FIG NO.
10—	POWER SUPPLY AND PCB (EP) ASSEMBLY				1
1	*Logic Board Assembly	29-25988-00		A-D	
	*Logic Board Assembly	29-26161-00		E-H	
2	**Plate, Hold	_____			
3	**Connector	_____			
4	**Ground Plate (D)	_____			
5	**Heat Sink	_____			
6	**Fuse, F1	29-26001-00			
7	**Fuse, F2	29-26002-00			
8	*Mother Board	29-25936-00			
9	*Power Cord	See Note 1		ADEH	
	*Power Cord	See Note 1		BCFG	
10	*Power Supply Assembly, 100V	29-25959-00		DH	
	*Power Supply Assembly, 120V	29-25058-00		AE	
	*Power Supply Assembly, 220/240V	29-25960-00		BC	
11	**Screw, Sems Washer Hd (M3x10)	See Note 2			
12	**95PTF3, 100/120V	_____		ADEH	
	**95PTF4, 220/240V	_____		BCFG	
13	**Switch, Voltage Control, 220/240V	_____		BCFG	
14	**Inlet, Power	_____			
15	**Label, Voltage, 220V	_____		CG	
	**Label, Voltage, 240V	_____		BF	
16	**Fuse, AC Line, 1.6A, 100/120V	29-26003-00		ADEH	
	**Fuse, AC Line, 1A, 220/240V	29-26004-00		BCFG	
17	**Noise Filter, PCB, 100/120V	_____		ADEH	
	**Noise Filter, PCB, 220/240V	_____		BCFG	
18	**Support, Cord	_____			
19	**Guide, Trance (B)	_____			
20	**Label, Voltage Selection, 220/240V	_____			
21	**Screw, Sems Washer Hd (M4x12)	See Note 2			
22	**Screw, Tapping (M3x6)	See Note 2			
23	**Screw, Sems Washer Hd (M4x6)	See Note 2			
24	**Power Switch, 100/120V	29-25962-00		ADEH	
	**Power Switch, 220/240V	29-26207-00		BCFG	
25	**Fuse Holder	29-25961-00			
Note 1: Power Cords are included in Country Kits.					
Note 2: This part included in MISCELLANEOUS SCREW/NUT/WASHER KIT DEC Part No. 29-25975-00 See page 4.					

PART NUMBER/DESCRIPTION SORT



**LA75 PRINTER SORT BY DEC PART NUMBER**

<b>PART NO.</b>	<b>DESCRIPTION</b>	<b>FIG. NO.</b>	<b>ITEM</b>
29-20464-01	Cartridge, Ribbon, LA50	7	1
29-25916-00	PRINthead ASSEMBLY	7	10
29-25917-00	TRACTOR ASSEMBLY	1	2
29-25917-00	TRACTOR ASSEMBLY	4	N/A
29-25918-00	MECHANICAL ASSEMBLY	1	3
29-25918-00	PRINTER MECHANICAL ASSEMBLY	2	N/A
29-25919-00	FRICTION RELEASE LEVER ASSEMBLY	5	12
29-25920-00	Smudge Guard	7	9
29-25920-00	Smudge Guard	2	42
29-25921-0	Motor, Line Feed	2	11
29-25921-00	Motor, Line Feed	9	7
29-25922-00	CARRIAGE ASSEMBLY (BOTTOM)	1	7
29-25922-00	CARRIAGE ASSEMBLY (BOTTOM)	8	N/A
29-25922-00	CARRIAGE ASSEMBLY (BOTTOM)	2	47
29-25923-00	Cable, Printhead	7	3
29-25923-00	Cable, Printhead	2	53
29-25924-00	PINCH ROLLER ASSEMBLY (Not Shown)	2	22
29-25924-00	PINCH ROLLER ASSEMBLY	6	1
29-25925-00	Paper-Out Sensor	9	42
29-25925-00	Sensor, Paper-Out	2	44
29-25927-00	Plate, Adjust, t0.5 (A)	7	4
29-25927-00	Plate, Adjust (A) (Not Shown)	2	33
29-25928-00	Plate, Adjust (B) (Not Shown)	2	33
29-25928-00	Plate, Adjust, t0.1 (B)	7	4
29-25929-00	Plate, Adjust, t0.2 (C)	7	4
29-25929-00	Plate, Adjust (C) (Not Shown)	2	33
29-25930-00	Paper Guide	2	21
29-25930-00	Guide, Paper	6	5
29-25931-00	Spring, Pinch Roller	6	6
29-25931-00	Spring, Pinch Roller (Not Shown)	2	23
29-25932-00	Lever, Tractor Lock, Left	2	12
29-25932-00	Lever, Tractor Lock, Left	9	4
29-25933-00	Stopper, Paper Feed Motor	9	8
29-25934-00	Deflector 1	9	49
29-25934-00	Deflector 1, (Old Design)	2	18
29-25935-00	Arm, Carriage Pulley	2	39
29-25935-00	Arm, Carriage Pulley	9	41
29-25936-00	Mother Board	10	8
29-25936-00	MOTHER BOARD (Not Shown)	2	43
29-25937-00	Belt, Carriage	8	29
29-25938-00	Plate, Bail Roller Hold	9	2
29-25938-00	Plate, Bail Roller, Hold (Not Shown)	2	17
29-25939-00	Plate, Platen Bushing	2	26
29-25939-00	Plate, Platen Bushing	9	3
29-25940-00	Cable, Control Panel, 16 Pin	9	20
29-25941-00	Plate, Spring, Carriage Shaft, Right	2	14
29-25941-00	Plate, Spring, Carriage Shaft, Right	9	25

## LA75 PRINTER SORT BY DEC PART NUMBER

PART NO.	DESCRIPTION	FIG. NO.	ITEM
29-25942-00	Spring, Plate, Free Lever	9	26
29-25942-00	Plate, Spring, Free Lever	2	15
29-25943-00	Shaft, Pinch Roller	9	30
29-25944-00	Supporter, Shift Gear Cam	9	31
29-25945-00	Cam, Shift Gear (Not Shown)	2	20
29-25945-00	Cam, Shift Gear	9	32
29-25947-00	Catch, Tractor (A)	9	34
29-25947-00	Catch, Tractor (A)	2	29
29-25948-00	Plate, Spring, Carriage Shaft, Left	9	35
29-25948-00	Plate, Spring, Carriage Shaft, Left (Not Shown)	2	8
29-25949-00	Lever, Impression Control (B)	2	49
29-25949-00	Lever, Impression Control (B)	7	5
29-25950-00	Bushing, Carriage Shaft (Not Shown)	2	46
29-25950-00	Bushing, Carriage Shaft	7	6
29-25951-00	Shaft, Carriage	2	48
29-25951-00	Shaft, Carriage	7	7
29-25952-00	Wiper, Felt	7	8
29-25953-00	Cam, Carriage	2	32
29-25953-00	Cam, Carriage	7	11
29-25954-00	Catch, Tractor (B)	9	28
29-25954-00	Holder, Tractor (R)	2	28
29-25955-00	PLATEN ASSEMBLY	5	1
29-25955-00	PLATEN UNIT ASSEMBLY	1	4
29-25955-00	Platen Assembly	2	24
29-25956-00	CARRIAGE MOTOR ASSEMBLY	9,2	15,2
29-25957-00	SENSOR ASSEMBLY	9	1
29-25957-00	SENSOR ASSEMBLY	2	45
29-25958-00	Power Supply Assembly, 120V	10	10
29-25959-00	Power Supply Assembly, 100V	10	10
29-25960-00	Power Supply Assembly, 220/240V	10	10
29-25961-00	Fuse Holder	10	25
29-25962-00	Power Switch, 100/120V	10	24
29-25963-00	Lever, Impression Control	2	34
29-25963-00	Lever, Impression Control (A)	9	22
29-25964-00	BAIL BAR ASSEMBLY	2	30
29-25964-00	BAIL BAR ASSEMBLY	6	8
29-25966-00	MECHANICAL ASSEMBLY MISCELLANEOUS PARTS KIT	2	Not Shown
29-25966-00	MISCELLANEOUS MECHANICAL ASSEMBLY ACCESSORY KIT	1	Not Shown
29-25967-00	COVER ASSEMBLY	1	1
29-25967-00	COVER ASSEMBLY	3	N/A
29-25968-00	Logic Board Assembly	10	1
29-25969-00	Control Panel	3	28
29-25970-00	Lever, Bail Release	6	7
29-25970-00	Lever, Bail Release	2	31
29-25971-00	Knob, Platen	3	30
29-25972-00	ACCESS COVER ASSEMBLY	3	2

**LA75 PRINTER SORT BY DEC PART NUMBER**

<b>PART NO.</b>	<b>DESCRIPTION</b>	<b>FIG. NO.</b>	<b>ITEM</b>
29-25973-00	PAPER COVER ASSEMBLY	3	21
29-25974-00	LOGIC BOARD ACCESS COVER ASSEMBLY	3	16
29-25975-00	MISCELLANEOUS SCREW/NUT/WASHER KIT	1	Not Shown
29-25976-00	MISCELLANEOUS SPRING KIT	1	Not Shown
29-25977-00	MISCELLANEOUS E-RING KIT	1	Not Shown
29-25978-00	MISCELLANEOUS GEAR KIT	1	Not Shown
29-25979-00	Paper Window	3	1
29-26001-00	Fuse, F1	10	6
29-26002-00	Fuse, F2	10	7
29-26003-00	Fuse, AC Line, 2A 100/115V	10	16
29-26004-00	Fuse, AC Line, 1A 220/240V	10	16
29-26148-00	Lever, Tractor Lock, (R)	9	43
29-26149-00	Ground Plate, Tractor	9	27
29-26205-00	Logic Board Assembly	10	1
29-26205-00	Ground Plate	3	32
29-26206-00	Wire, Ribbon	8	1
29-26207-00	Power Switch, 220/240V	10	24
29-26251-00	Clamp, Head	8	27
29-26252-00	Spring, Head	8	28
29-26256-00	Head PCB Assembly	8	13
29-26376-00	Deflector 2	9	49
29-26376-00	Deflector 2, (New Design)	2	18
29-26377-00	Tractor Unit Assembly	4	1
30-27294-01	LA75 AUTOMATIC SHEET FEEDER	1	10
36-27022-01	Label, "Front Panel"	3	31
LA75-A2	Model LA75-A2, 120V, 50/60 Hz	1	N/A
LA75-A3	Model LA75-A3, 240V, 50/60 Hz	1	N/A
LA75-A4	Model LA75-A4, 220V, 50/60 Hz	1	N/A
LA75-A5	Model LA75-A5, 100V, 50/60 Hz	1	N/A
LA75P-A2	Model LA75P-A2, 120V, 50/60 Hz	1	N/A
LA75P-A3	Model LA75P-A3, 240V, 50/60 Hz	1	N/A
LA75P-A4	Model LA75P-A4, 220V, 50/60 Hz	1	N/A
LA75P-A5	Model LA75P-A5, 100V, 50/60 Hz	1	N/A
N/A	Screw, Set, Paper Feed Motor	1	Not Shown
N/A	Screw, Tapping (M3x6)	1	Not Shown
N/A	Washer, Impression Control Lever	1	Not Shown
N/A	Screw, Carriage Motor	1	Not Shown
N/A	Stopper, Paper Feed Motor	1	Not Shown
N/A	Screw, Sems Washer Hd (M3x10)	1	Not Shown
N/A	Screw, Tapping (M2.6x6)	1	Not Shown
N/A	LA75/LA75P COMPANION PRINTER	1	N/A
N/A	Screw, Sems Washer Hd (M2.6x6)	1	Not Shown
N/A	Gear, Tractor	1	Not Shown

**LA75 PRINTER SORT BY DEC PART NUMBER**

<b>PART NO.</b>	<b>DESCRIPTION</b>	<b>FIG. NO.</b>	<b>ITEM</b>
bn/A	Gear, Platen (B)	1	Not Shown
N/A	Cushion, Carriage Motor	1	Not Shown
N/A	PAPER GUIDE ASSEMBLY	1	5
N/A	Plate, Ground	1	Not Shown
N/A	Screw, Set, Paper Feed Motor	1	Not Shown
N/A	Gear, Reduction	1	Not Shown
N/A	Gear, Platen (A)	1	Not Shown
N/A	E-Ring, (M4)	1	Not Shown
N/A	Screw, Sems Washer Hd (M4x12)	1	Not Shown
N/A	Spring, Carrier Pulley Arm	1	Not Shown
N/A	Spring, Sail Roller Arm	1	Not Shown
N/A	Spring, Shift Gear	1	Not Shown
N/A	Screw, Sems Washer Hd (M3x6)	1	Not Shown
N/A	Screw, Sems Washer Hd (M4x6)	1	Not Shown
N/A	Screw, Sems Washer Hd (M4x8)	1	Not Shown
N/A	Screw, Carriage Motor (B)	1	Not Shown
N/A	Screw, Sems (M3x6)	1	Not Shown
N/A	Washer, Impression Control Lever	1	Not Shown
N/A	Cushion, Rubber, Printer	1	Not Shown
N/A	Gear, Shift	1	Not Shown
N/A	CARRIAGE ASSEMBLY (TOP)	1	6
N/A	FRAME ASSEMBLY	1	8
N/A	POWER SUPPLY & PCB (E7) ASSEMBLY	1	9
N/A	E-Ring, (M2)	1	Not Shown
N/A	E-Ring, (M2.5)	1	Not Shown
N/A	E-Ring, (M3)	1	Not Shown
N/A	Screw, Deflector	1	Not Shown
N/A	Screw, Impression Control	1	Not Shown
N/A	Screw, Frame Set	1	Not Shown
N/A	Spring, Tractor Lock	1	Not Shown
N/A	Spring, Platen Knob	1	Not Shown
N/A	Spring, Indicator	1	Not Shown
N/A	Spring, Platen Gear	1	Not Shown
N/A	Screw, Sems Washer Hd (M3x8)	1	Not Shown
N/A	Gear, Tractor Idler	1	Not Shown
N/A	Plate, Carriage Shaft Spring, Right	1	Not Shown
N/A	Spring, Ribbon Wire	1	Not Shown
N/A	Cushion, Carriage Motor (B)	2	3
N/A	Stopper, Paper Feed Motor (Not Shown)	2	9
N/A	Screw, Set, Paper Feed Motor	2	10
N/A	Cushion, Rubber, Printer	2	16
N/A	Spring, Tractor Lock	2	13
N/A	Screw, Carriage Motor (B)	2	4
N/A	Gear, Shift	2	5
N/A	Stopper, Paper Feed Motor	2	Not Shown
N/A	Screw, Set, Paper Feed Motor	2	Not Shown
N/A	Lever, Tractor Lock, Right	2	42A



## LA75 PRINTER SORT BY DEC PART NUMBER

PART NO.	DESCRIPTION	FIG. NO.	ITEM
N/A	Frame	2	1
N/A	Screw, Double Sems M3x8 (Not Shown)	2	57
N/A	E Ring, M2	2	61
N/A	E Ring, M3 (Not Shown)	2	62
N/A	E Ring, M4	2	63
N/A	Protector (Not Shown)	2	51
N/A	Screw, Double Sems M2.6x6	2	55
N/A	Holder, Flexible Cable (Not Shown)	2	50
N/A	Gear, Reduction	2	7
N/A	Spring, Bail Roller Arm	2	52
N/A	Screw, Deflector	2	19
N/A	Screw, Double Sems M3x6	2	56
N/A	Screw, Double Sems, M3x10 (Not Shown)	2	58
N/A	Screw, Double Sems, M4x6 (Not Shown)	2	59
N/A	Screw, Double Sems, M4x8 (Not Shown)	2	60
N/A	Screw, Carriage Motor	2	Not Shown
N/A	Spring, Shift Gear	2	6
N/A	Screw, Sems M3x6	2	54
N/A	Washer, Impression Control Lever	2	Not Shown
N/A	Plate, Spring, Carriage Shaft, Right	2	Not Shown
N/A	Rubber, Printer Cushion	2	Not Shown
N/A	Screw, Impression Control	2	38
N/A	Bushing, Platen, Left	2	25
N/A	Gear, Tractor Idler	2	27
N/A	Cushion, Carriage Motor	2	Not Shown
N/A	Washer, Impression Control Lever	2	35
N/A	Lever, Release	2	36
N/A	Lever, Free	2	37
N/A	Spring, Carriage Pulley Arm	2	40
N/A	Spring, Ribbon Wire	2	41
N/A	Paper Stand	3	24
N/A	Leg, Paper Stand	3	25
N/A	Operation Panel Plate	3	5
N/A	TOP COVER ASSEMBLY	3	6
N/A	Rear Cover	3	22
N/A	Indicator	3	26
N/A	Screw, Back Cover	3	18
N/A	E-Ring	3	19
N/A	Spring, Platen Knob	3	20
N/A	Tear Bar	3	3
N/A	Carriage Cover	3	4
N/A	Cassette Cover	3	13
N/A	Screw, Top Cover	3	7
N/A	Screw, Tapping (M3x6)	3	29
N/A	Shield Plate	3	15
N/A	Back Cover	3	17

**LA75 PRINTER SORT BY DEC PART NUMBER**

<b>PART NO.</b>	<b>DESCRIPTION</b>	<b>FIG. NO.</b>	<b>ITEM</b>
N/A	Indicator (Left)	3	9
N/A	Indicator (Right)	3	10
N/A	BOTTOM COVER ASSEMBLY	3	11
N/A	Screw, Bottom Cover	3	12
N/A	Slide Cover	3	14
N/A	Top Cover	3	8
N/A	Spring, Indicator	3	27
N/A	Cover, Paper Stand	3	23
N/A	Ground Plate (B), Tractor	4	11
N/A	Label, "SELECTION"	4	4
N/A	Frame, Tractor	4	5
N/A	Gear, Tractor	4	2
N/A	Bushing, Left, Tractor	4	3
N/A	Bushing, Right, Tractor	4	6
N/A	Shaft (B), Tractor	4	7
N/A	Shaft (A), Tractor	4	8
N/A	E-Ring, M4	4	9
N/A	Ground Plate (A), Tractor	4	10
N/A	Bushing, Platen, Left	5	2
N/A	Platen Gear Assembly	5	3
N/A	Gear, Platen (B)	5	4
N/A	Spring, Platen Gear	5	5
N/A	Gear, Platen (A)	5	6
N/A	Frame, Paper Empty	5	7
N/A	Pin, Set (M2x16)	5	8
N/A	Platen	5	9
N/A	Bushing, Platen, Right	5	11
N/A	Lever, Release	5	13
N/A	Lever, Free	5	14
N/A	Platen Unit Assembly	5	N/A
N/A	Spring, Platen	5	10
N/A	E-Ring (M2.5)	6	16
N/A	Arm, Bail Roller, Left	6	9
N/A	Arm, Pinch Roller	6	2
N/A	Screw, Sems Washer Hd (M3x6)	6	17
N/A	PAPER GUIDE ASSEMBLY	6	N/A
N/A	Roller, Pinch (B)	6	3
N/A	Roller, Pinch (C)	6	4
N/A	Roller, Bail	6	10
N/A	Guide, Sheet	6	11
N/A	Shaft, Bail Roller	6	12
N/A	Arm, Bail Roller, Right	6	13
N/A	Spring, Bail Roller Arm	6	14
N/A	E-Ring (M2)	6	15

## LA75 PRINTER SORT BY DEC PART NUMBER

PART NO.	DESCRIPTION	FIG. NO.	ITEM
N/A	CARRIAGE ASSEMBLY (TOP)	7	N/A
N/A	Spring, Ribbon Wire	7	2
N/A	E-Ring, M4	7	12
N/A	Screw, Sems Washer Hd (M2.6x6)	7	13
N/A	Stopper, Cam	8	19
N/A	Pulley, Ribbon	8	2
N/A	Plate, Select	8	3
N/A	Gear, Twin	8	4
N/A	Washer, Ribbon Pulley	8	5
N/A	Spring, Ribbon	8	7
N/A	Gear, Ribbon Drive	8	8
N/A	Frame, Ribbon, Top	8	9
N/A	Bushing, Ribbon Frame, Left	8	10
N/A	Roller, Carriage	8	11
N/A	Clamp, Carriage	8	12
N/A	Switch, Home Position	8	14
N/A	Screw, Head PCB	8	15
N/A	Bushing, Ribbon Frame, Right	8	16
N/A	Carriage	8	17
N/A	Guide, Lead Wire	8	18
N/A	Screw, Cam Stopper	8	20
N/A	Spring, Cam Stopper	8	21
N/A	Spring, Adjust	8	22
N/A	Nut, Adjust	8	23
N/A	Cam, Ribbon Shift	8	24
N/A	Washer, Adjust, (M5.5)	8	25
N/A	Nut, Lock	8	26
N/A	Guide, Belt	8	30
N/A	Screw, Tapping (M2.6x6)	8	32
N/A	Screw, (M2.6x5)	8	33
N/A	E-RING (M4)	8	34
N/A	E-RING (M3)	8	35
N/A	Frame, Ribbon, Bottom	8	6
N/A	Screw, Sems (M3x10)	8	31
N/A	Ground Plate A	9	21
N/A	Screw, Sems Washer Hd (M4x8)	9	46
N/A	FRAME ASSEMBLY	9	Not Shown
N/A	Spring, Tractor Lock	9	5
N/A	Screw, Set, Paper Feed Motor	9	6
N/A	Screw, Carriage Motor (B)	9	9
N/A	Cushion, Carriage Motor (B)	9	10
N/A	Screw, Set, Frame	9	11
N/A	Cushion, Rubber, Printer	9	12
N/A	Screw, Deflector (deleted)	9	13
N/A	E-Ring (M4)	9	14

## LA75 PRINTER SORT BY DEC PART NUMBER

PART NO.	DESCRIPTION	FIG. NO.	ITEM
N/A	Motor, Carriage	9	16
N/A	Cushion, Carriage Motor	9	17
N/A	Pulley, Carriage Motor	9	18
N/A	Frame	9	19
N/A	Washer, Impression Control Lever	9	23
N/A	Screw, Impression Control	9	24
N/A	Gear, Pinch Roller	9	29
N/A	Holder, Flexible Cable	9	33
N/A	Gear, Tractor Idler	9	36
N/A	Gear, Shift	9	37
N/A	Spring, Shift Gear	9	38
N/A	Gear, Reduction	9	39
N/A	Spring, Carriage Pulley Arm	9	40
N/A	Spring, Tractor Lock	9	44
N/A	Screw, Sems Washer Hd (M3x6)	9	45
N/A	Screw, Tapping (M3x6)	9	47
N/A	E-Ring (M3)	9	48
N/A	Support, Cord	10	18
N/A	POWER SUPPLY AND PCB (EP) ASSEMBLY	10	N/A
N/A	Plate, Hold	10	2
N/A	Connector	10	3
N/A	Ground Plate (D)	10	4
N/A	Heat Sink	10	5
N/A	Power Cord, 100/120V	10	9
N/A	Power Cord, 220/240V	10	9
N/A	Screw, Sems Washer Hd (M3x10)	10	11
N/A	95PTF3, 100/120V	10	12
N/A	95PTF4, 220/240V	10	12
N/A	Switch, Voltage Control, 220/240V	10	13
N/A	Inlet, Power	10	14
N/A	Label, Voltage, 220V	10	15
N/A	Label, Voltage, 240V	10	15
N/A	Screw, Sems Washer Hd (M4x12)	10	21
N/A	Noise Filter, PCB, 100/120V	10	17
N/A	Noise Filter, PCB, 220/240V	10	17
N/A	Guide, Trance	10	19
N/A	Label, Voltage Selection, 220/240V	10	20
N/A	Screw, Tapping (M3x6)	10	22
N/A	Screw, Sems Washer Hd (M4x6)	10	23

**LA75 PRINTER SORTED BY DEC PART DESCRIPTION**

<b>DESCRIPTION</b>	<b>DEC PART NO.</b>	<b>FIG. NO.</b>	<b>ITEM</b>
95PTF3, 100/120V	N/A	10	12
95PTF4, 220/240V	N/A	10	12
ACCESS COVER ASSEMBLY	29-25972-00	3	2
Arm, Bail Roller, Left	N/A	6	9
Arm, Bail Roller, Right	N/A	6	13
Arm, Carriage Pulley	29-25935-00	9	41
Arm, Carriage Pulley	29-25935-00	2	39
Arm, Pinch Roller	N/A	6	2
Back Cover	N/A	3	17
BAIL BAR ASSEMBLY	29-25964-00	6	8
BAIL BAR ASSEMBLY	29-25964-00	2	30
Belt, Carriage	29-25937-00	8	29
BOTTOM COVER ASSEMBLY	N/A	3	11
Bushing, Carriage Shaft	29-25950-00	7	6
Bushing, Carriage Shaft (Not Shown)	29-25950-00	2	46
Bushing, Left, Tractor	N/A	4	3
Bushing, Platen, Left	N/A	5	7
Bushing, Platen, Left	N/A	2	25
Bushing, Platen, Right	N/A	5	11
Bushing, Ribbon Frame, Left	N/A	8	10
Bushing, Ribbon Frame, Right	N/A	8	16
Bushing, Right, Tractor	N/A	4	6
Cable, Control Panel, 16 Pin	29-25940-00	9	20
Cable, Printhead	29-25923-00	2	53
Cable, Printhead	29-25923-00	7	3
Cam, Carriage	29-25953-00	2	32
Cam, Carriage	29-25953-00	7	11
Cam, Ribbon Shift	N/A	8	24
Cam, Shift Gear	29-25945-00	9	32
Cam, Shift Gear (Not Shown)	29-25945-00	2	20
Carriage	N/A	8	17
CARRIAGE ASSEMBLY (BOTTOM)	29-25922-00	8	N/A
CARRIAGE ASSEMBLY (BOTTOM)	29-25922-00	2	47
CARRIAGE ASSEMBLY (BOTTOM)	29-25922-00	1	7
CARRIAGE ASSEMBLY (TOP)	N/A	7	N/A
CARRIAGE ASSEMBLY (TOP)	N/A	1	6
Carriage Cover	N/A	3	4
CARRIAGE MOTOR ASSEMBLY	29-25956-00	9	15
CARRIAGE MOTOR ASSEMBLY	29-25956-00	2	2
Cartridge, Ribbon, LA50	29-20464-01	7	1
Cassette Cover	N/A	3	13
Catch, Tractor (A)	29-25947-00	9	34
Catch, Tractor (A)	29-25947-00	2	29
Catch, Tractor (B)	29-25954-00	9	28
Clamp, Carriage	N/A	8	12
Clamp, Head	29-26251-00	8	27
Connector	N/A	10	3
Control Panel	29-25969-00	3	28

**LA75 PRINTER SORTED BY DEC PART DESCRIPTION**

<b>DESCRIPTION</b>	<b>DEC PART NO.</b>	<b>FIG. NO.</b>	<b>ITEM</b>
COVER ASSEMBLY	29-25967-00	1	1
COVER ASSEMBLY	29-25967-00	3	N/A
Cover, Paper Stand	N/A	3	23
Cushion, Carriage Motor	N/A	9	17
Cushion, Carriage Motor	N/A	1	Not Shown
Cushion, Carriage Motor	N/A	2	Not Shown
Cushion, Carriage Motor (B)	N/A	2	3
Cushion, Rubber, Printer	N/A	9	12
Cushion, Rubber, Printer	N/A	2	16
Cushion, Rubber, Printer	N/A	1	Not Shown
Cushion, Carriage Motor (B)	N/A	9	10
Deflector 1	29-25934-00	9	49
Deflector 1, (Old Design)	29-25934-00	2	18
Deflector 2	29-26376-00	9	49
Deflector 2, (New Design)	29-26376-00	2	18
E Ring, M2	N/A	2	61
E Ring, M3 (Not Shown)	N/A	2	62
E Ring, M4	N/A	2	63
E-Ring	N/A	3	19
E-Ring (M2)	N/A	6	15
E-Ring (M2.5)	N/A	6	16
E-Ring (M3)	N/A	9	48
E-RING (M3)	N/A	8	35
E-Ring (M4)	N/A	9	14
E-RING (M4)	N/A	8	34
E-Ring, (M2)	N/A	1	Not Shown
E-Ring, (M2.5)	N/A	1	Not Shown
E-Ring, (M3)	N/A	1	Not Shown
E-Ring, (M4)	N/A	1	Not Shown
E-Ring, M4	N/A	4	9
E-Ring, M4	N/A	7	12
Frame	N/A	9	19
Frame	N/A	2	1
FRAME ASSEMBLY	N/A	9	Not Shown
FRAME ASSEMBLY	N/A	1	8
Frame, Paper Empty	N/A	5	7
Frame, Ribbon, Bottom	N/A	8	6
Frame, Ribbon, Top	N/A	8	9
Frame, Tractor	N/A	4	5
FRICTION RELEASE LEVER ASSEMBLY	29-25919-00	5	12
Fuse Holder	29-25961-00	10	25
Fuse, AC Line, 1A 220/240V	29-26004-00	10	16
Fuse, AC Line, 2A 100/115V	29-26003-00	10	16
Fuse, F1	29-26001-00	10	6
Fuse, F2	29-26002-00	10	7

## LA75 PRINTER SORTED BY DEC PART DESCRIPTION

DESCRIPTION	DEC PART NO.	FIG. NO.	ITEM
Gear, Pinch Roller	N/A	9	29
Gear, Platen (A)	N/A	1	Not Shown
Gear, Platen (A)	N/A	5	6
Gear, Platen (B)	N/A	5	4
Gear, Platen (B)	N/A	1	Not Shown
Gear, Reduction	N/A	9	39
Gear, Reduction	N/A	1	Not Shown
Gear, Reduction	N/A	2	7
Gear, Ribbon Drive	N/A	8	8
Gear, Shift	N/A	9	37
Gear, Shift	N/A	2	5
Gear, Shift	N/A	1	Not Shown
Gear, Tractor	N/A	4	2
Gear, Tractor	N/A	1	Not Shown
Gear, Tractor Idler	N/A	9	36
Gear, Tractor Idler	N/A	2	27
Gear, Tractor Idler	N/A	1	Not Shown
Gear, Twin	N/A	8	4
Ground Plate	29-26205-00	3	32
Ground Plate (A), Tractor	N/A	4	10
Ground Plate (B), Tractor	N/A	4	11
Ground Plate (D)	N/A	10	4
Ground Plate A	N/A	9	21
Ground Plate, Tractor	29-26149-00	9	27
Guide, Belt	N/A	8	30
Guide, Lead Wire	N/A	8	18
Guide, Paper	29-25930-00	6	5
Guide, Sheet	N/A	6	11
Guide, Trance	N/A	10	19
Head PCB Assembly	29-26256-00	8	13
Heat Sink	N/A	10	5
Holder, Flexible Cable	N/A	9	33
Holder, Flexible Cable (Not Shown)	N/A	2	50
Holder, Tractor (R)	29-25954-00	2	28
Indicator	N/A	3	26
Indicator (Left)	N/A	3	9
Indicator (Right)	N/A	3	10
Inlet, Power	N/A	10	14
Knob, Platen	29-25971-00	3	30
LA75X-SF AUTOMATIC SHEET FEEDER	3027294-01	1	10
LA75/LA75P COMPANION PRINTER	N/A	1	N/A
Label, "Front Plate"	36-27022-01	3	31
Label, "SELECTION"	N/A	4	4
Label, Voltage Selection, 220/240V	N/A	10	20

**LA75 PRINTER SORTED BY DEC PART DESCRIPTION**

<b>DESCRIPTION</b>	<b>DEC PART NO.</b>	<b>FIG. NO.</b>	<b>ITEM</b>
Label, Voltage, 220V	N/A	10	15
Label, Voltage, 240V	N/A	10	15
Leg, Paper Stand	N/A	3	25
Lever, Bail Release	29-25970-00	2	31
Lever, Bail Release	29-25970-00	6	7
Lever, Free	N/A	2	37
Lever, Free	N/A	5	14
Lever, Impression Control	29-25963-00	2	34
Lever, Impression Control (A)	29-25963-00	9	22
Lever, Impression Control (B)	29-25949-00	2	49
Lever, Impression Control (B)	29-25949-00	7	5
Lever, Release	N/A	5	13
Lever, Release	N/A	2	36
Lever, Tractor Lock, (R)	29-26148-00	9	43
Lever, Tractor Lock, Right	N/A	2	42A
Lever, Tractor Lock, Left	29-25932-00	9	4
Lever, Tractor Lock, Left	29-25932-00	2	12
LOGIC BOARD ACCESS COVER ASSEMBLY	29-25974-00	3	16
Logic Board Assembly	29-25968-00	10	1
Logic Board Assembly	29-26161-00	10	1
<b>MECHANICAL ASSEMBLY</b>	29-25918-00	1	3
<b>MECHANICAL ASSEMBLY MISCELLANEOUS PARTS KIT</b>	29-25966-00	2	Not Shown
<b>MISCELLANEOUS E-RING KIT</b>	29-25977-00	1	Not Shown
<b>MISCELLANEOUS GEAR KIT</b>	29-25978-00	1	Not Shown
<b>MISCELLANEOUS MECHANICAL ASSEMBLY ACCESSORY KIT</b>	29-25966-00	1	Not Shown
<b>MISCELLANEOUS SCREW/NUT/WASHER KIT</b>	29-25975-00	1	Not Shown
<b>MISCELLANEOUS SPRING KIT</b>	29-25976-00	1	Not Shown
Model LA75-A2, 120V, 50/60 Hz	LA75-A2	1	N/A
Model LA75-A3, 240V, 50/60 Hz	LA75-A3	1	N/A
Model LA75-A4, 220V, 50/60 Hz	LA75-A4	1	N/A
Model LA75-A5, 100V, 50/60 Hz	LA75-A5	1	N/A
Model LA75P-A2, 120V, 50/60 Hz	LA75P-A2	1	N/A
Model LA75P-A3, 240V, 50/60 Hz	LA75P-A3	1	N/A
Model LA75P-A4, 220V, 50/60 Hz	LA75P-A4	1	N/A
Model LA75P-A5, 100V, 50/60 Hz	LA75P-A5	1	N/A
Mother Board	29-25936-00	10	8
MOTHER BOARD (Not Shown)	29-25936-00	2	43
Motor, Carriage	N/A	9	16
Motor, Line Feed	29-25921-00	9	7
Motor, Line Feed	29-25921-0	2	11
Noise Filter, PCB, 100/120V	N/A	10	17
Noise Filter, PCB, 220/240V	N/A	10	17
Nut, Adjust	N/A	8	23
Nut, Lock	N/A	8	26



## LA75 PRINTER SORTED BY DEC PART DESCRIPTION

DESCRIPTION	DEC PART NO.	FIG. NO.	ITEM
Operation Panel Plate	N/A	3	5
PAPER COVER ASSEMBLY	29-25973-00	3	21
Paper Guide	29-25930-00	2	21
PAPER GUIDE ASSEMBLY	N/A	1	5
PAPER GUIDE ASSEMBLY	N/A	6	N/A
Paper Stand	N/A	3	24
Paper Window	29-25979-00	3	1
Paper-Out Sensor	29-25925-00	9	42
Pin, Set (M2x16)	N/A	5	8
PINCH ROLLER ASSEMBLY	29-25924-00	6	1
PINCH ROLLER ASSEMBLY (Not Shown)	29-25924-00	2	22
Plate, Adjust (A) (Not Shown)	29-25927-00	2	33
Plate, Adjust (B) (Not Shown)	29-25928-00	2	33
Plate, Adjust (C) (Not Shown)	29-25929-00	2	33
Plate, Adjust, t0.1 (B)	29-25928-00	7	4
Plate, Adjust, t0.2 (C)	29-25929-00	7	4
Plate, Adjust, t0.5 (A)	29-25927-00	7	4
Plate, Bail Roller Hold	29-25938-00	9	2
Plate, Bail Roller, Hold (Not Shown)	29-25938-00	2	17
Plate, Carriage Shaft Spring, Right	N/A	1	Not Shown
Plate, Ground	N/A	1	Not Shown
Plate, Hold	N/A	10	2
Plate, Platen Bushing	29-25939-00	9	3
Plate, Platen Bushing	29-25939-00	2	26
Plate, Select	N/A	8	3
Plate, Spring, Carriage Shaft, Left	29-25948-00	9	35
Plate, Spring, Carriage Shaft, Left (Not Shown)	29-25948-00	2	8
Plate, Spring, Carriage Shaft, Right	29-25941-00	9	25
Plate, Spring, Carriage Shaft, Right	N/A	2	Not Shown
Plate, Spring, Carriage Shaft, Right	29-25941-00	2	14
Plate, Spring, Free Lever	29-25942-00	2	15
Platen	N/A	5	9
Platen Assembly	29-25955-00	2	24
PLATEN ASSEMBLY	29-25955-00	5	1
Platen Gear Assembly	N/A	5	3
PLATEN UNIT ASSEMBLY	29-25955-00	1	4
PLATEN UNIT ASSEMBLY		5	N/A
Power Cord, 100/120V	N/A	10	9
Power Cord, 220/240V	N/A	10	9
POWER SUPPLY & PCB (EP) ASSEMBLY	N/A	1	9
POWER SUPPLY AND PCB (EP) ASSEMBLY	N/A	10	N/A
Power Supply Assembly, 100V	29-25959-00	10	10
Power Supply Assembly, 120V	29-25958-00	10	10
Power Supply Assembly, 220/240V	29-25960-00	10	10
Power Switch, 100/120V	29-25962-00	10	24
Power Switch, 220/240V	29-26207-00	10	24

**LA75 PRINTER SORTED BY DEC PART DESCRIPTION**

<b>DESCRIPTION</b>	<b>DEC PART NO.</b>	<b>FIG. NO.</b>	<b>ITEM</b>
<b>PRINTER MECHANICAL ASSEMBLY</b>	29-25918-00	2	N/A
<b>PRINthead ASSEMBLY</b>	29-25916-00	7	10
Protector (Not Shown)	N/A	2	51
Pulley, Carriage Motor	N/A	9	18
Pulley, Ribbon	N/A	8	2
<b>Rear Cover</b>	N/A	3	22
Roller, Bail	N/A	6	10
Roller, Carriage	N/A	8	11
Roller, Pinch (B)	N/A	6	3
Roller, Pinch (C)	N/A	6	4
Rubber, Printer Cushion	N/A	2	Not Shown
<b>Screw, (M2.6x5)</b>	N/A	8	33
Screw, Back Cover	N/A	3	18
Screw, Bottom Cover	N/A	3	12
Screw, Cam Stopper	N/A	8	20
Screw, Carriage Motor	N/A	1	Not Shown
Screw, Carriage Motor	N/A	2	Not Shown
Screw, Carriage Motor (B)	N/A	9	9
Screw, Carriage Motor (B)	N/A	1	Not Shown
Screw, Carriage Motor (B)	N/A	2	4
Screw, Deflector (deleted)	N/A	9	13
Screw, Deflector	N/A	1	Not Shown
Screw, Deflector	N/A	2	19
Screw, Double Sems M2.6x6	N/A	2	55
Screw, Double Sems M3x6	N/A	2	56
Screw, Double Sems M3x8 (Not Shown)	N/A	2	57
Screw, Double Sems, M3x10 (Not Shown)	N/A	2	58
Screw, Double Sems, M4x6 (Not Shown)	N/A	2	59
Screw, Double Sems, M4x8 (Not Shown)	N/A	2	60
Screw, Frame Set	N/A	1	Not Shown
Screw, Head PCB	N/A	8	15
Screw, Impression Control	N/A	9	24
Screw, Impression Control	N/A	2	38
Screw, Impression Control	N/A	1	Not Shown
Screw, Sems (M3x10)	N/A	8	31
Screw, Sems (M3x6)	N/A	1	Not Shown
Screw, Sems M3x6	N/A	2	54
Screw, Sems Washer Hd (M2.6x6)	N/A	7	13
Screw, Sems Washer Hd (M2.6x6)	N/A	1	Not Shown
Screw, Sems Washer Hd (M3x10)	N/A	10	11
Screw, Sems Washer Hd (M3x10)	N/A	1	Not Shown
Screw, Sems Washer Hd (M3x6)	N/A	9	45
Screw, Sems Washer Hd (M3x6)	N/A	1	Not Shown
Screw, Sems Washer Hd (M3x6)	N/A	6	17
Screw, Sems Washer Hd (M3x8)	N/A	1	Not Shown
Screw, Sems Washer Hd (M4x12)	N/A	10	21

**LA75 PRINTER SORTED BY DEC PART DESCRIPTION**

<b>DESCRIPTION</b>	<b>DEC PART NO.</b>	<b>FIG. NO.</b>	<b>ITEM</b>
Screw, Sems Washer Hd (M4x12)	N/A	1	Not Shown
Screw, Sems Washer Hd (M4x6)	N/A	10	23
Screw, Sems Washer Hd (M4x6)	N/A	1	Not Shown
Screw, Sems Washer Hd (M4x8)	N/A	9	46
Screw, Sems Washer Hd (M4x8)	N/A	1	Not Shown
Screw, Set, Frame	N/A	9	11
Screw, Set, Paper Feed Motor	N/A	9	6
Screw, Set, Paper Feed Motor	N/A	2	Not Shown
Screw, Set, Paper Feed Motor	N/A	2	10
Screw, Set, Paper Feed Motor	N/A	1	Not Shown
Screw, Set, Paper Feed Motor	N/A	1	Not Shown
Screw, Tapping (M2.6x6)	N/A	8	32
Screw, Tapping (M2.6x6)	N/A	1	Not Shown
Screw, Tapping (M3x6)	N/A	10	22
Screw, Tapping (M3x6)	N/A	3	29
Screw, Tapping (M3x6)	N/A	1	Not Shown
Screw, Top Cover	N/A	3	7
Screw, Tapping (M3x6)	N/A	9	47
SENSOR ASSEMBLY	29-25957-00	9	1
SENSOR ASSEMBLY	29-25957-00	2	45
Sensor, Paper-Out	29-25925-00	2	44
Shaft (A), Tractor	N/A	4	8
Shaft (B), Tractor	N/A	4	7
Shaft, Bail Roller	N/A	6	12
Shaft, Carriage	29-25951-00	7	7
Shaft, Carriage	29-25951-00	2	48
Shaft, Pinch Roller	29-25943-00	9	30
Shield Plate	N/A	3	15
Slide Cover	N/A	3	14
Smudge Guard	29-25920-00	2	42
Smudge Guard	29-25920-00	7	9
Spring, Adjust	N/A	8	22
Spring, Bail Roller Arm	N/A	2	52
Spring, Bail Roller Arm	N/A	6	14
Spring, Bail Roller Arm	N/A	1	Not Shown
Spring, Cam Stopper	N/A	8	21
Spring, Carriage Pulley Arm	N/A	9	40
Spring, Carriage Pulley Arm	N/A	2	40
Spring, Carrier Pulley Arm	N/A	1	Not Shown
Spring, Head	29-26252-00	8	28
Spring, Indicator	N/A	1	Not Shown
Spring, Indicator	N/A	3	27
Spring, Pinch Roller	29-25931-00	6	6
Spring, Pinch Roller (Not Shown)	29-25931-00	2	23
Spring, Plate, Free Lever	29-25942-00	9	26
Spring, Platen	N/A	5	10
Spring, Platen Gear	N/A	5	5
Spring, Platen Gear	N/A	1	Not Shown

## LA75 PRINTER SORTED BY DEC PART DESCRIPTION

DESCRIPTION	DEC PART NO.	FIG. NO.	ITEM
Spring, Platen Knob	N/A	1	Not Shown
Spring, Platen Knob	N/A	3	20
Spring, Ribbon	N/A	8	7
Spring, Ribbon Wire	N/A	2	41
Spring, Ribbon Wire	N/A	1	Not Shown
Spring, Ribbon Wire	N/A	7	2
Spring, Shift Gear	N/A	9	38
Spring, Shift Gear	N/A	1	Not Shown
Spring, Shift Gear	N/A	2	6
Spring, Tractor Lock	N/A	9	5
Spring, Tractor Lock	N/A	9	44
Spring, Tractor Lock	N/A	2	13
Spring, Tractor Lock	N/A	1	Not Shown
Stopper, Cam	N/A	8	19
Stopper, Paper Feed Motor	29-25933-00	9	8
Stopper, Paper Feed Motor	N/A	1	Not Shown
Stopper, Paper Feed Motor	N/A	2	Not Shown
Stopper, Paper Feed Motor (Not Shown)	N/A	2	9
Support, Cord	N/A	10	18
Supporter, Shift Gear Cam	29-25944-00	9	31
Switch, Home Position	N/A	8	14
Switch, Voltage Control, 220/240V	N/A	10	13
Tear Bar	N/A	3	3
Top Cover	N/A	3	8
TOP COVER ASSEMBLY	N/A	3	6
TRACTOR ASSEMBLY	29-25917-00	4	N/A
TRACTOR ASSEMBLY	29-25917-00	1	2
Tractor Unit Assembly	29-26377-00	4	1
Washer, Adjust, (M5.5)	N/A	8	25
Washer, Impression Control Lever	N/A	2	Not Shown
Washer, Impression Control Lever	N/A	1	Not Shown
Washer, Impression Control Lever	N/A	1	Not Shown
Washer, Impression Control Lever	N/A	2	35
Washer, Impression Control Lever	N/A	9	23
Washer, Ribbon Pulley	N/A	8	5
Wiper, Felt	29-25952-00	7	8
Wire, Ribbon	29-26206-00	8	1